

A Additional Function Dot-move setting

Switch on → Press setting P2 button once, the motor will run for hint → Press up button one time → Press down button once, the motor will run for hint → ok
Dot-move setting is ok

⚠ Repeat setting, function is cancelled

A Additional Function Add Emitter

Switch on → a X2 → b → ok
Press "a" emitter's setting button "(P2)" once, the motor will run for hint, Press "a" emitter's setting button "(P2)" again → Continue to press "b" emitter's setting button "(P2)" one time the motor will run for hint → Emitter adding is ok

⚠ The time period for POWER ON should be 5 seconds minimum

A Additional Function Cancel the limit

Switch on → Press setting P2 button once, the motor will run for hint → Press down button one time → Press setting P2 button once, the motor will run for hint → ok
The limit switch of Tubular motor has been deleted successfully

A Additional Function Cancel Emitter

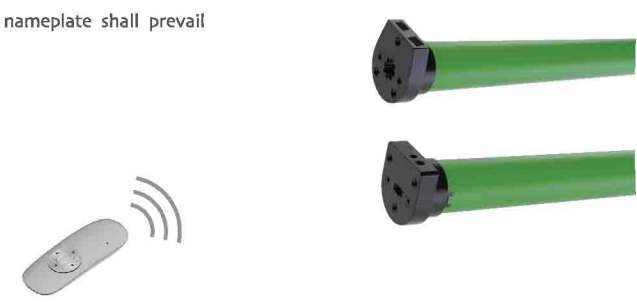
Switch on → Press setting P2 button once, the motor will run for hint → Press stop button one time → Press setting P2 button once, the motor will run for hint → ok
cancelling is ok

⚠ To clean up the emitter means deleting all the memory of emitter and limit switch in the motor receivers

A Additional Function rechargeable Description

Motors can be supplied power by 12v battery pole or recharged by DC216 battery board or DC520 transformer

433MHz 868MHz
All controls support 433MHz & 868MHz
All controls support 12V
Specific parameters to the nameplate shall prevail
CE
E:Electronic
Electronic Limit + Built-in Receiver



DM16CE Tubular Motor Specification

Version No. : A/01

T Technical Support

1. 5-channel emitter = single channel emitter x 5
One channel of emitter can control 20 receivers at most at the same time. Rated Torque : 0.3N.m

2. DM16CE Tubular Motor
One Electronic motor maximum can store 20 channels, over 20 channels, if still need add new channels, it will be repeating covered in turn from second channel.

⚠ Please set the limit position before use, as the setting method please see: 5 'set up/down limit position' as reference.
Group control programme is noneffective; deleting programme, adding programme and setting limit switch is effective

Control Range

	L1 Open	L2 Partition	Emission frequency
12V	200m	35m	433.92MHz

T Matchable emitter

⚠ For the emitters without setting button like DC316, you can press Up button and Stop button at the same time to work as the same function as setting button.

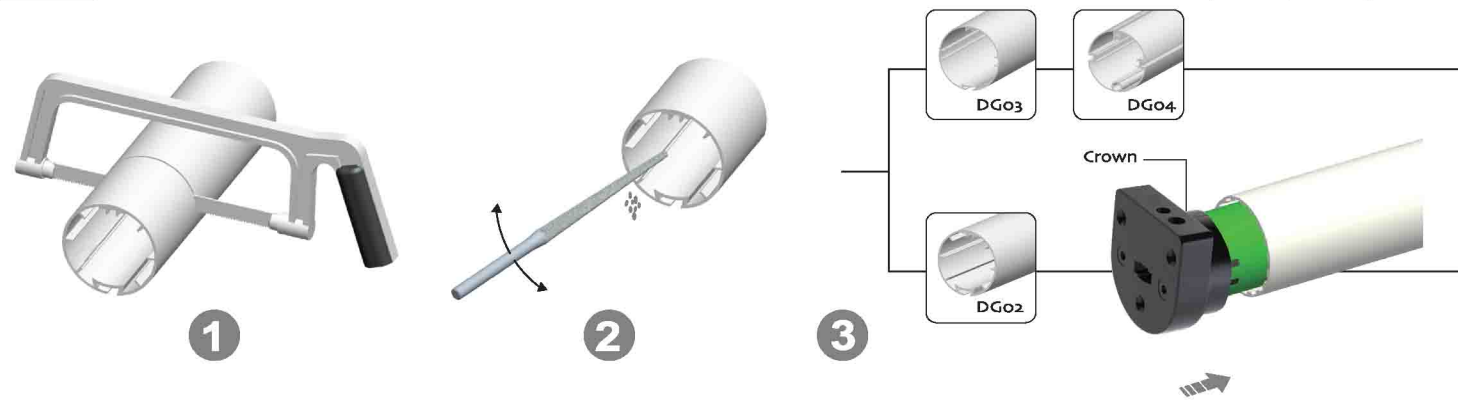
Button specification

DM16CE
It should be connected to a power adapter

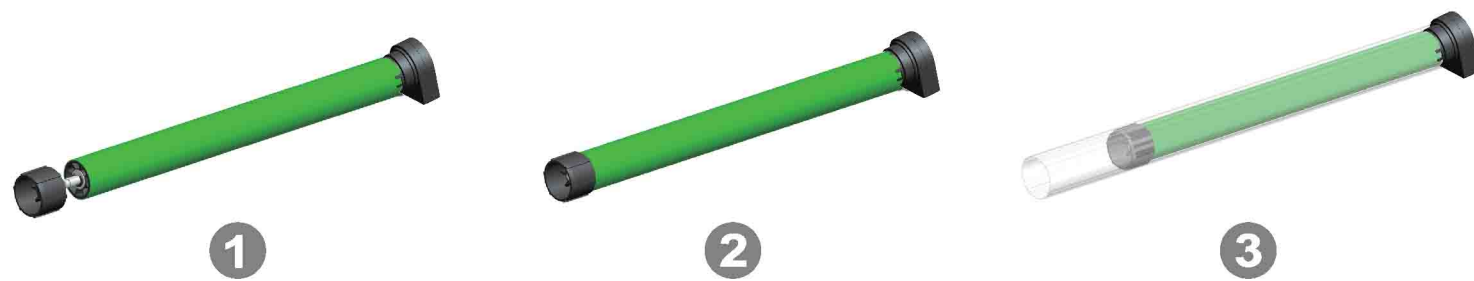
UP STOP DOWN
SETTING BUTTON (P2)

⚠ Attention

1 Crown installation



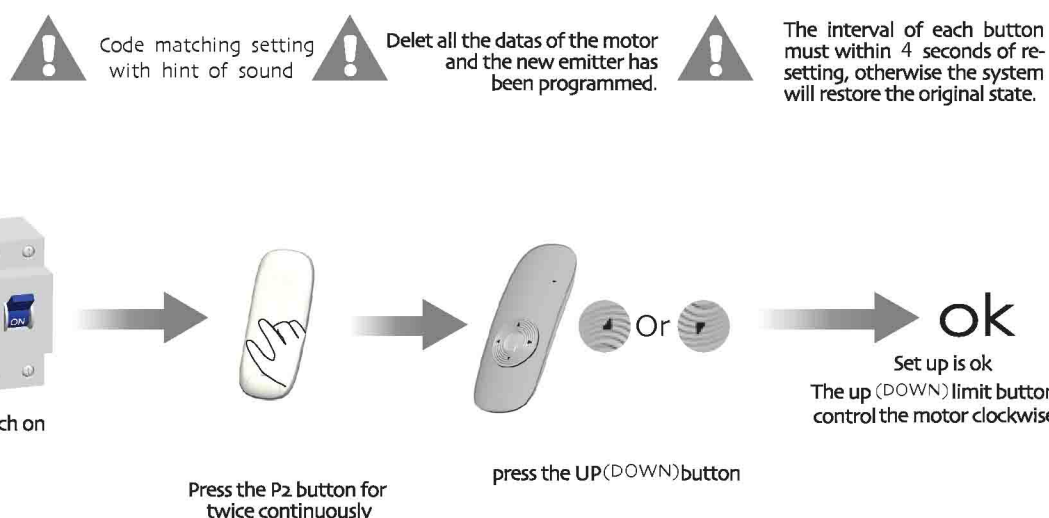
2 Drive adapter installation



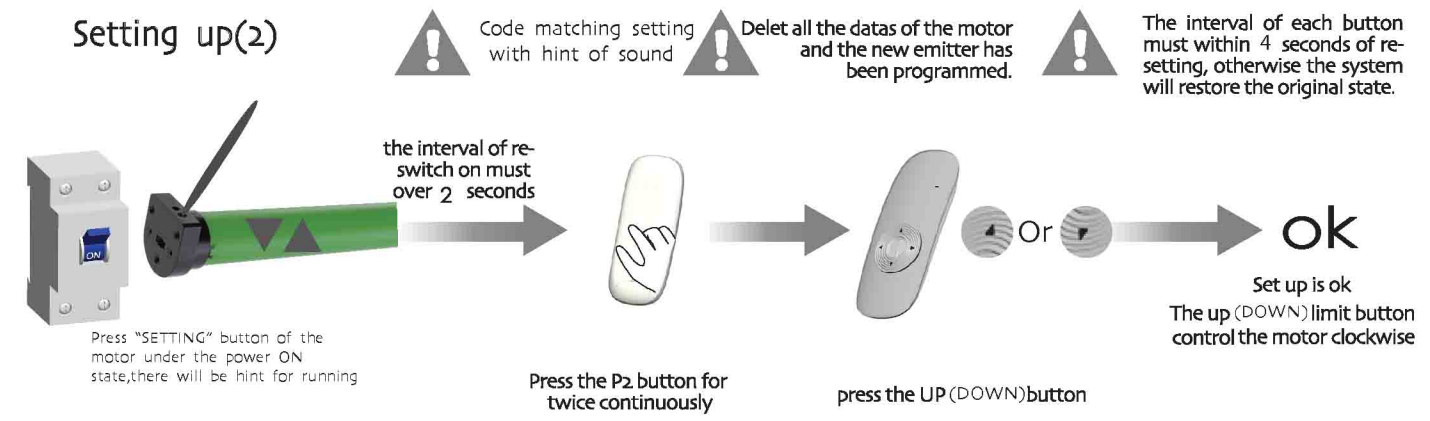
3 Bracket installation



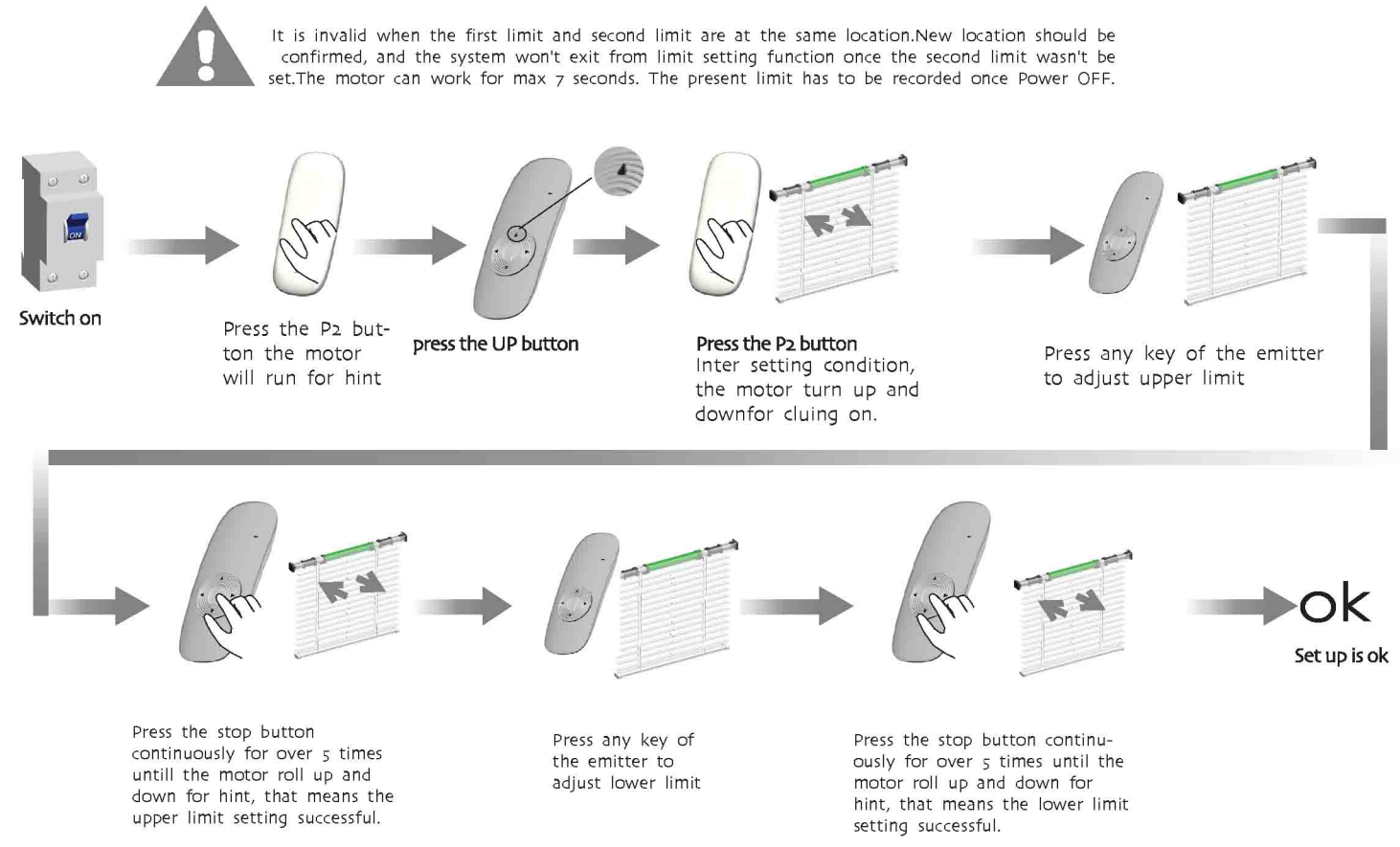
4 Setting up(1)



Setting up(2)



5 set up/down limit position



7 The third limit point setting

