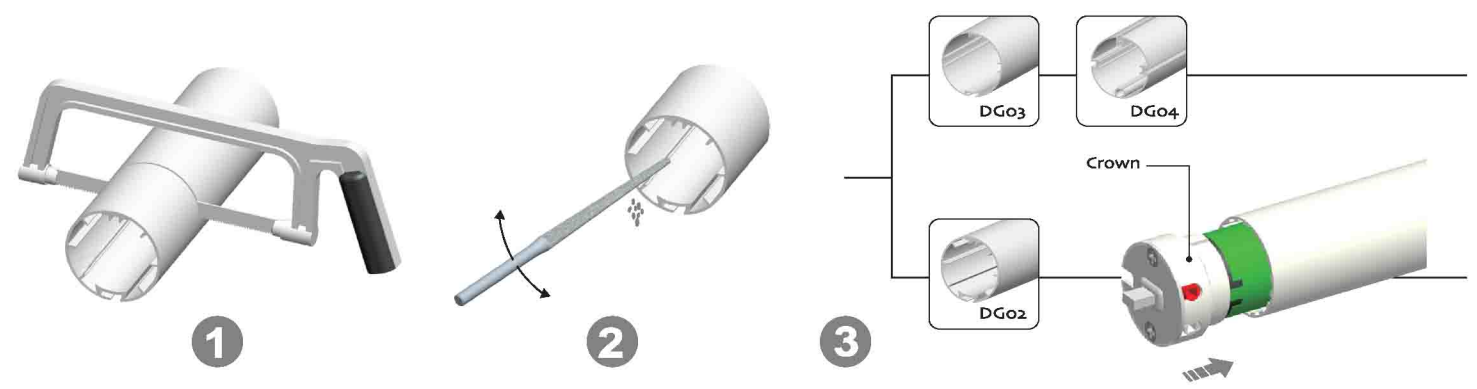


1

Crown installation



2

Drive adapter installation



3

Bracket installation

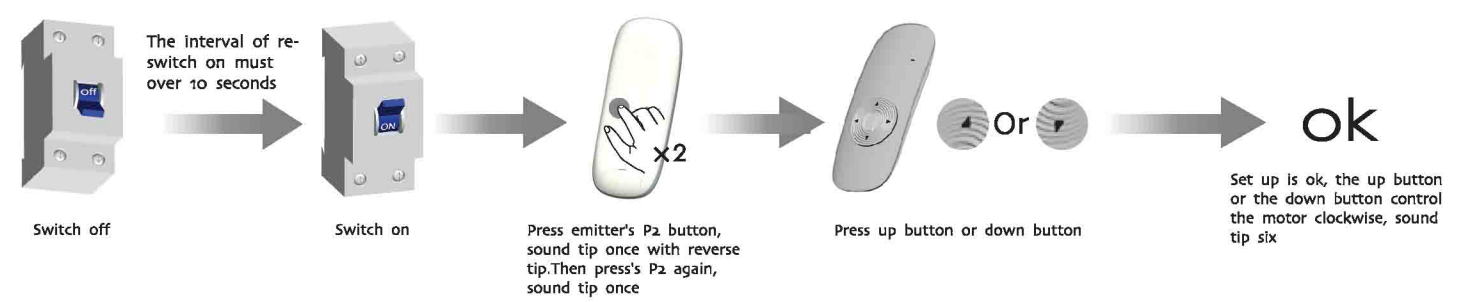


4

Setting up(1)

! Delete all the datas of the motor and the new emitter has been programmed

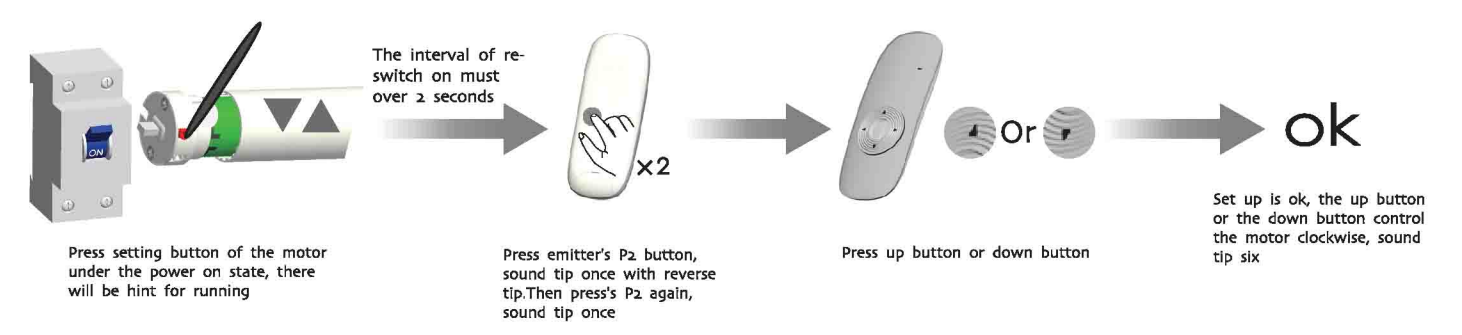
! The interval of each button must within 10 seconds of resetting, otherwise the system will restore the original state



Setting up(2)

! Delete all the datas of the motor and the new emitter has been programmed

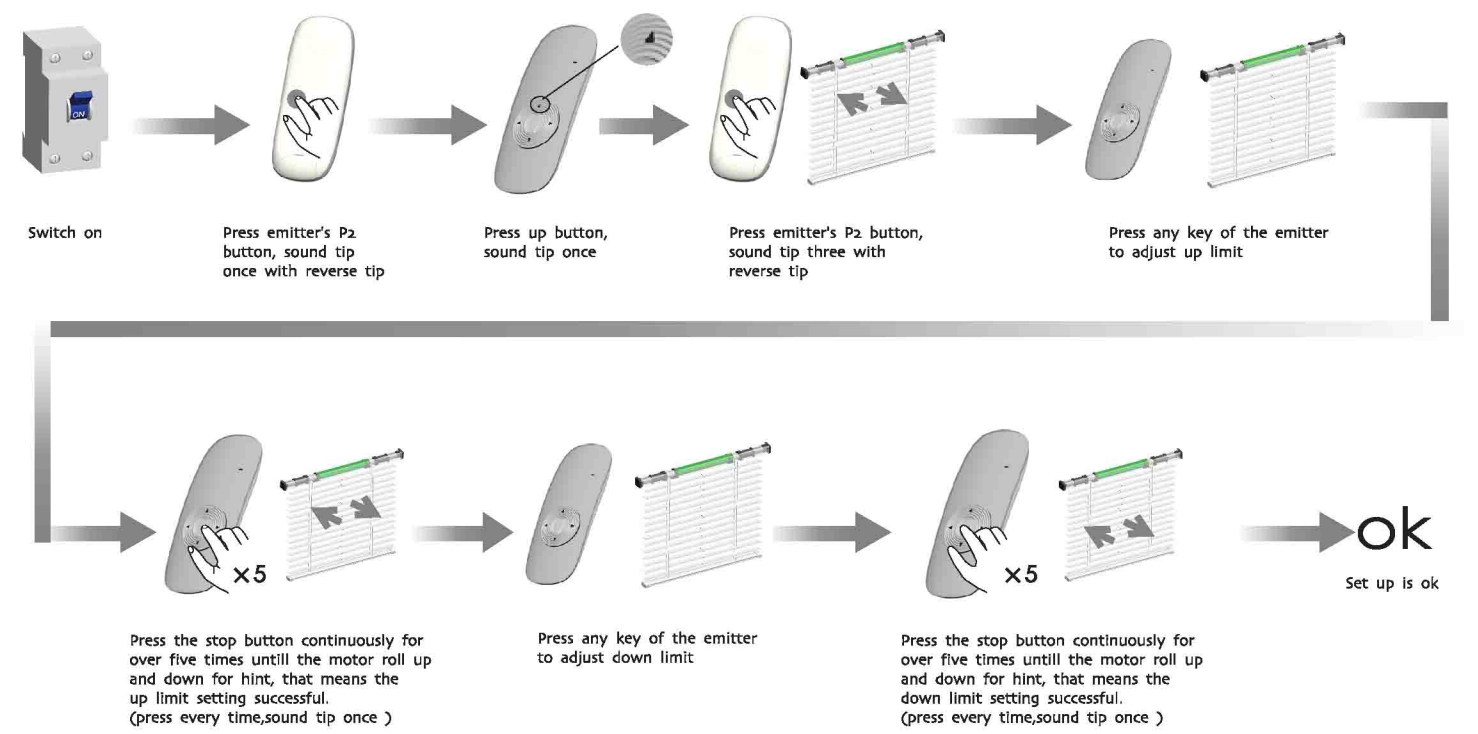
! The interval of each button must within 10 seconds of resetting, otherwise the system will restore the original state



5

Set up/down limit position

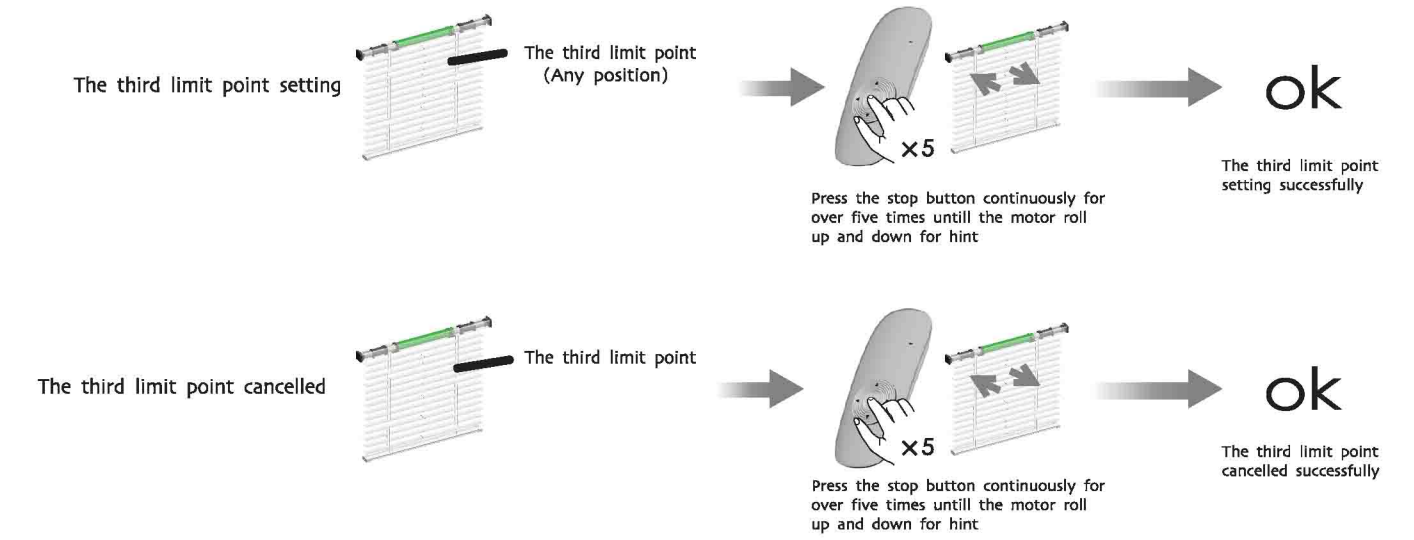
! It is invalid when the first limit and second limit are at the same location. New location should be confirmed, and the system won't exit from limit setting function once the second limit wasn't be set. The motor can work for max 7 seconds. The present limit has to be recorded once Power off.



6

The third limit point setting

! After the up limit and down limit setting, you can set the third limit point between them as the half open position. The third limit point will be cancelled as the cancellation of limit and code matching; After the third limit point setting, if you want to set a new third limit, please cancel the previous third limit point.: Limit setting with hint of sound;



A Additional Function

Dot-move setting

Switch on → Press emitter's P2 button, sound tip once with reverse tip → Press up button, sound tip once → Press down button, sound tip for one time with reverse tip → **ok**

Repeat setting, function is cancelled

Dot-move setting is ok, sound tip for three times

A Additional Function

Add emitter

Switch on, sound tip once → Press "a" emitter's P2 button, sound tip once with reverse tip. Then press "a" emitter's P2 again. Sound tip once → Press "b" emitter's P2 button, sound tip for five times → **ok**

The time period for POWER ON should be 5 seconds minimum

Emitter adding is ok

A Additional Function

Cancel the limit

Switch on → Press emitter's P2 button, sound tip once with reverse tip → Press down button, sound tip once → Press emitter's P2 button, sound tip for two times with reverse tip → **ok**

The limit switch of tubular motor has been deleted successfully

A Additional Function

Cancel emitter

Switch on → Press emitter's P2 button, sound tip once with reverse tip → Press stop button, sound tip once → Press emitter's P2 button, sound tip for four times with reverse tip → **ok**

To clean up the emitter means deleting all the memory of emitter and limit switch in the motor receivers

Cancelling is ok

A Additional Function

Rechargeable description

The motor can be charged by both DC212 or the 12V battery pole DC224 / DC224A. The difference between DC224 and DC224A is that DC224A is rechargeable by solar panel DC6838 or adaptor DC250.

All controls support 433MHz & 868MHz
Specific parameters to the nameplate shall prevail

E:Electronic
Electronic Limit + Built-in Receiver
+ Resistance And Stop Function

DM25CE Tubular Motor

Specification

Version No. : A/02

T Technical support

- 5-channel emitter = single channel emitter × 5
One channel of emitter can control 20 receivers at most at the same time.
- DM25CE Tubular Motor
One Electronic motor maximum can store 20 channels, over 20 channels, if still need add new channels, it will be repeating covered in turn from second channel.

Please set the limit position before use, as the setting method please see: 'set up/down limit position' as reference.
Group control programme is noneffective; deleting programme, adding programme and setting limit switch is effective

Control range

	L1 Open	L2 Partition	Emission frequency
12v	200m	35m	433.92MHz

T Technical Support

Matchable emitters

For the emitters without setting button like DC316, you can press up button and stop button at the same time to work as the same function as setting button.

Button specification

DM25CE

Setting button
It should be connected to a power adapter
Setting button

UP
STOP
DOWN
Setting button

Attention

Incorrect installation methods shown with 'X' marks: dipping in water, using a hammer, and using a power drill.