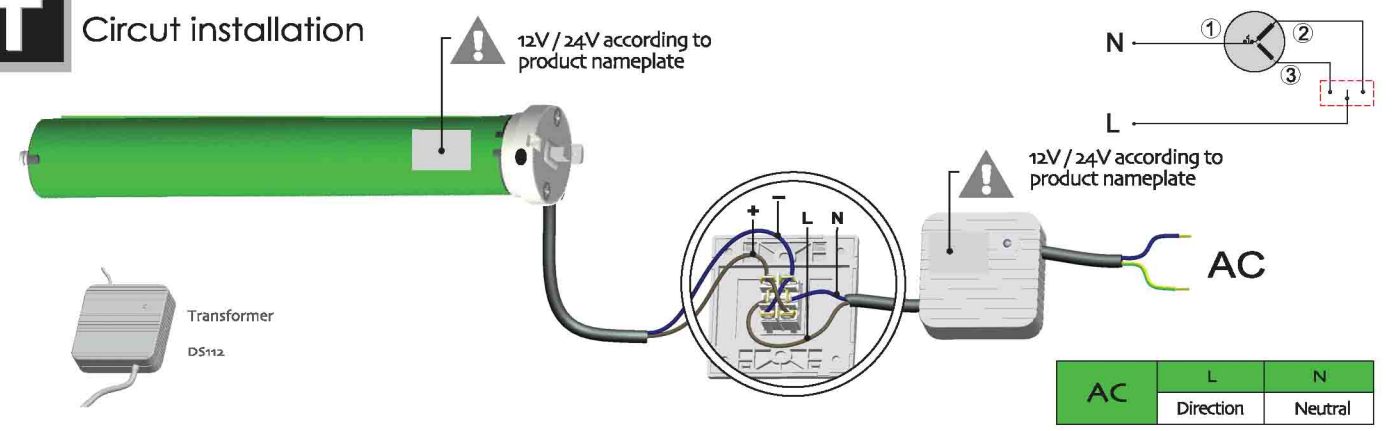
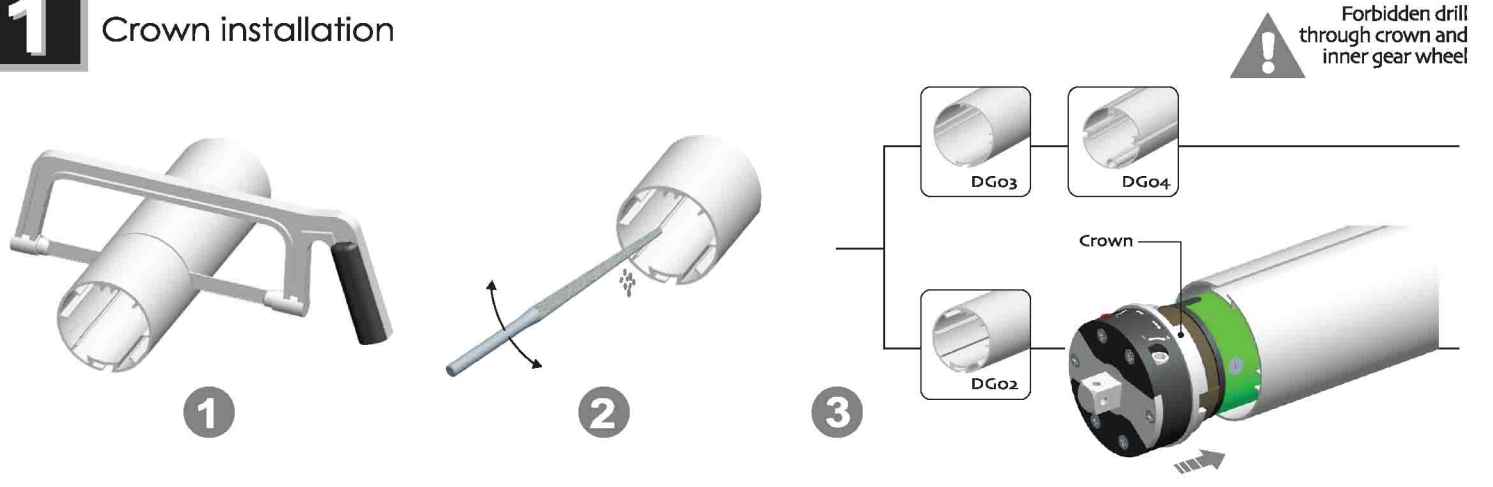
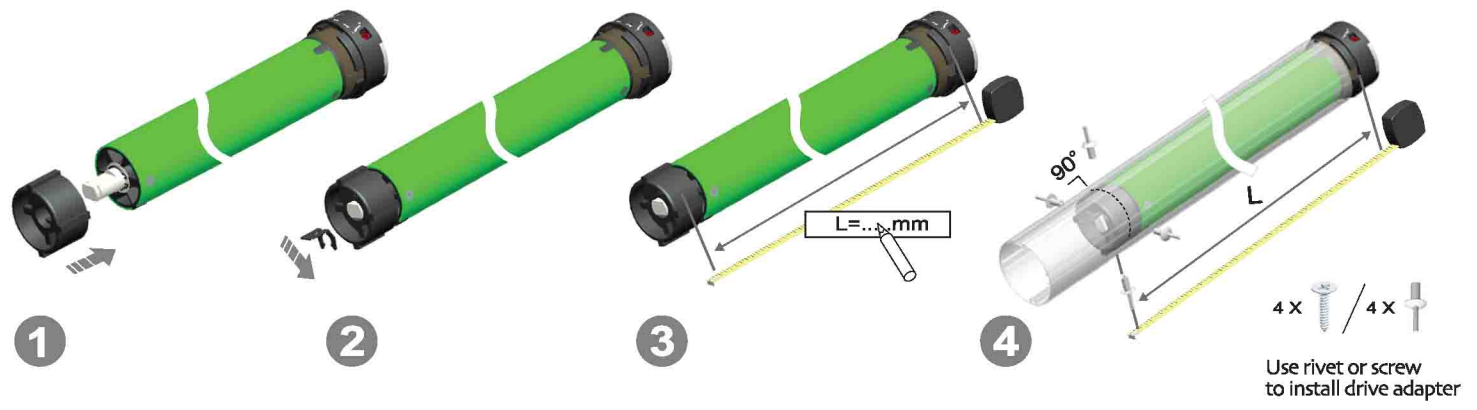


**T****Circuit installation**

CE

All controls support 24V/12V

**B: Button Electronic**  
Electronic Limit + DC Motor  
Resistance and stop function**DM25DB DC Tubular Motor**  
Specification**1****Crown installation****2****Drive adapter installation****3****Bracket installation**

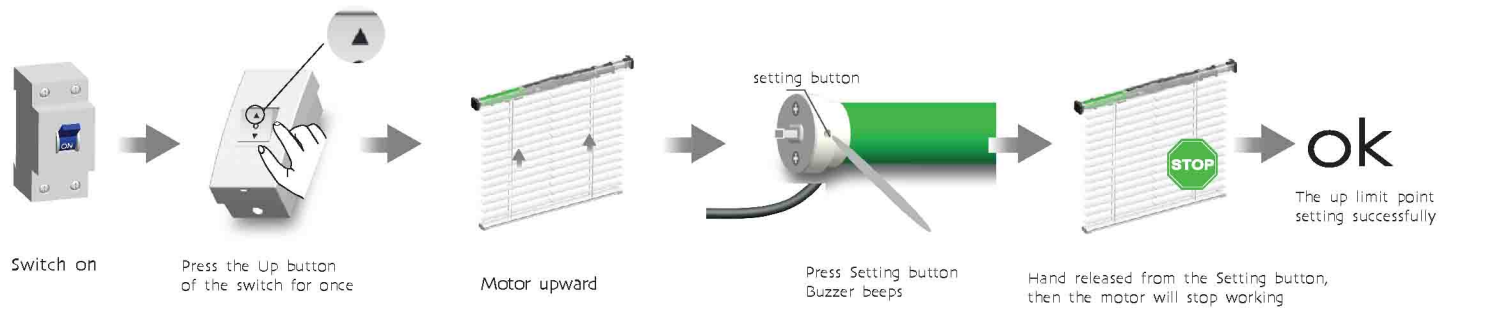
Version No. : A/00

**T****Setting limit switch method**

Down limit setting. Press Down button of the switch for once, other operation is same with that of Up limit Setting. It's unworkable if the Down limit and Up limit be set at the same location. In this case, a new location should be confirmed.



After the power off, the system will remain to its present setting once the Down limit didn't be set and exit from limit setting function.

**T****Applicable control system****Applicable mechanical switch**

Only mechanical switch can be applied to this DC motor

**Attention**