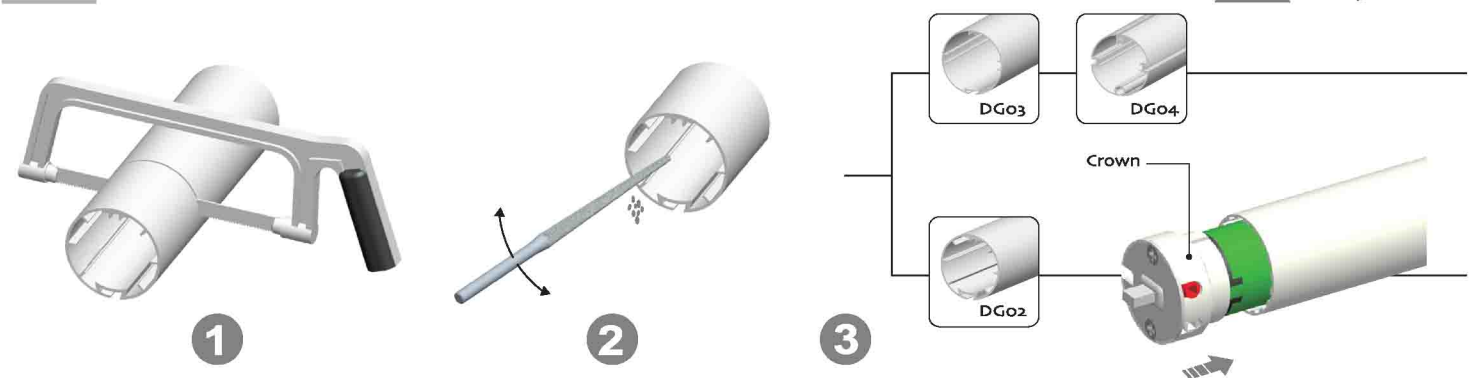
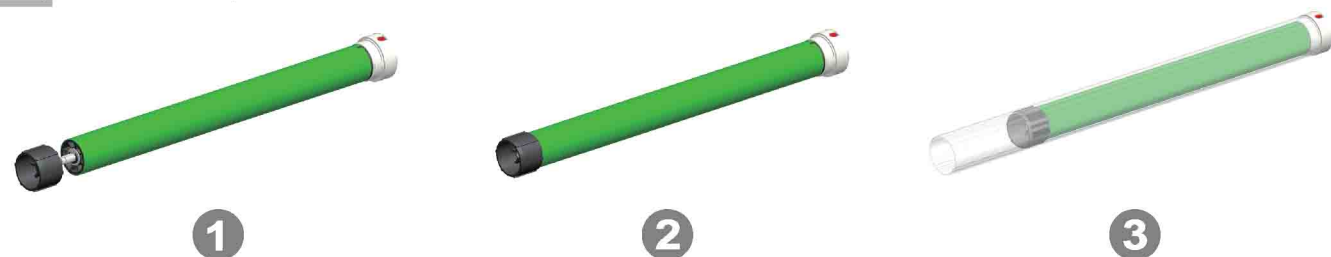


1 Crown installation



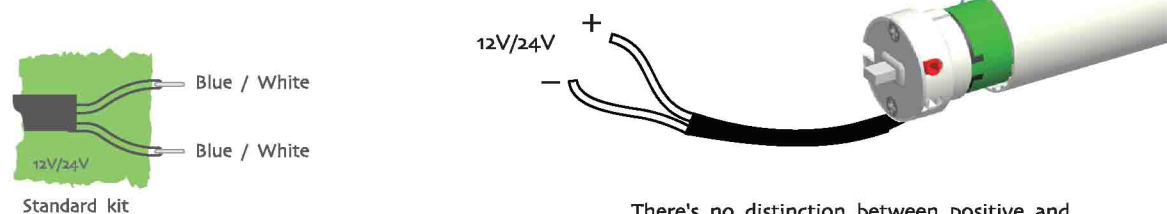
2 Drive adapter installation



3 Bracket installation



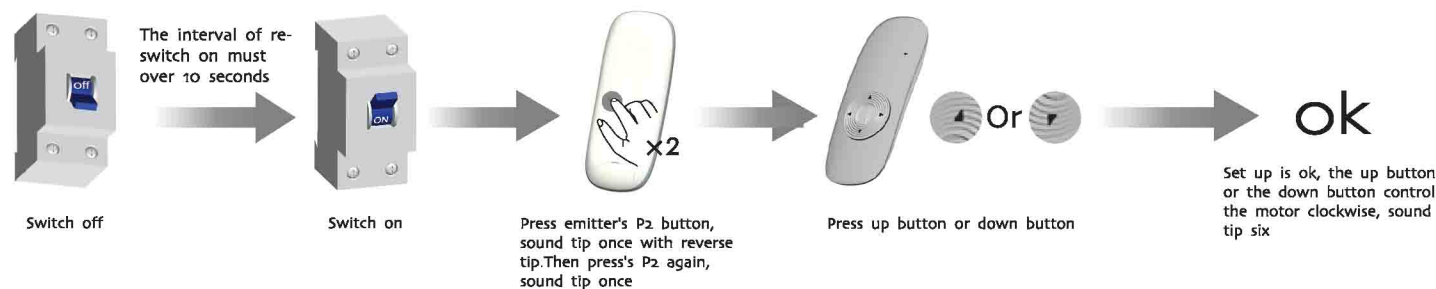
4 Circuit installation



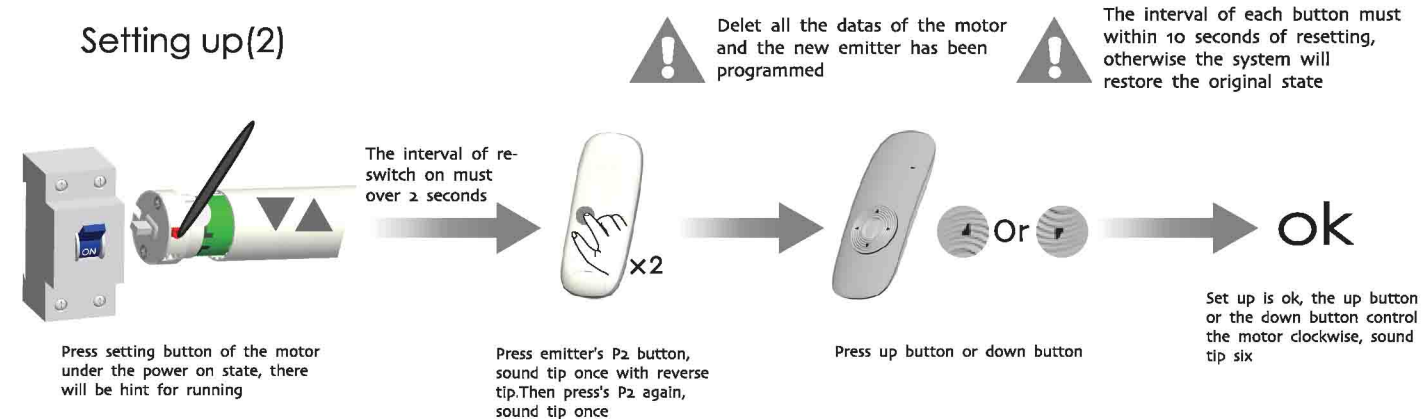
5 Setting up(1)

! Delete all the datas of the motor and the new emitter has been programmed

! The interval of each button must within 10 seconds of resetting, otherwise the system will restore the original state

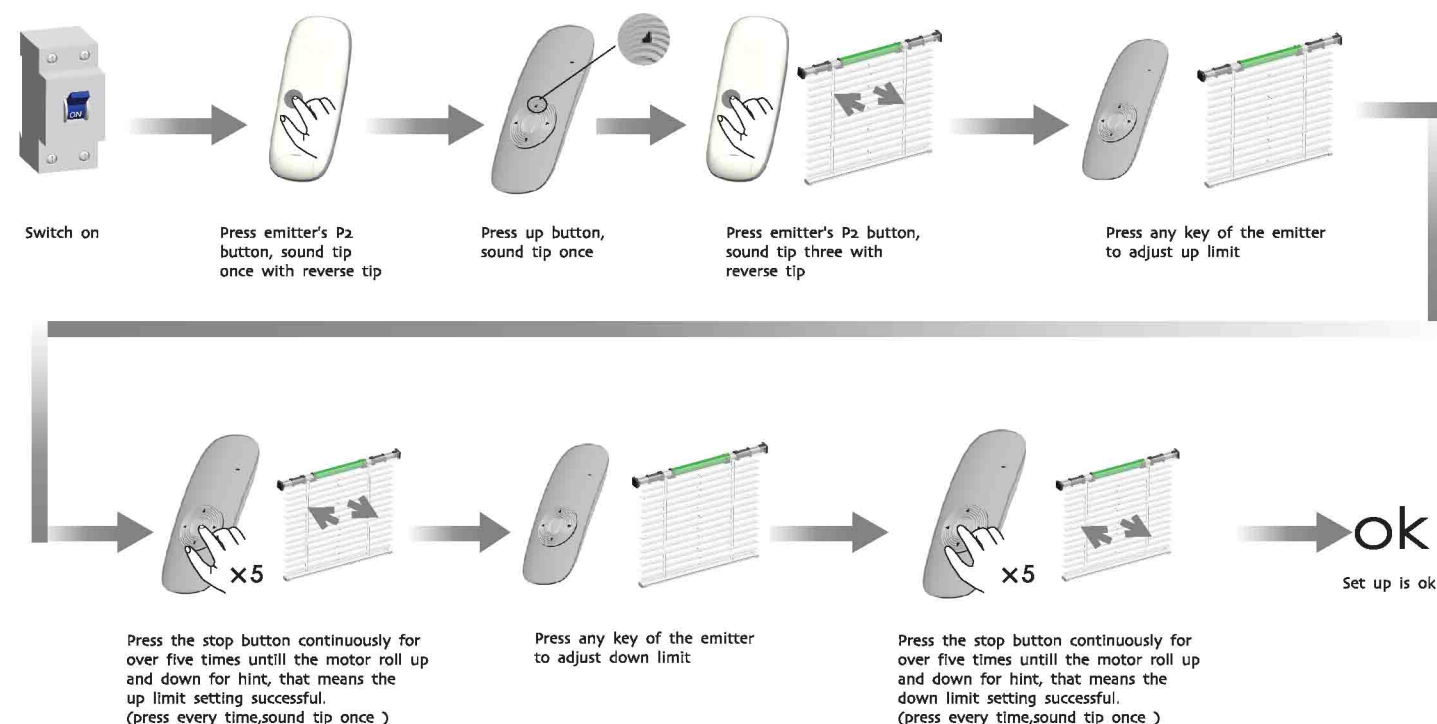


Setting up(2)



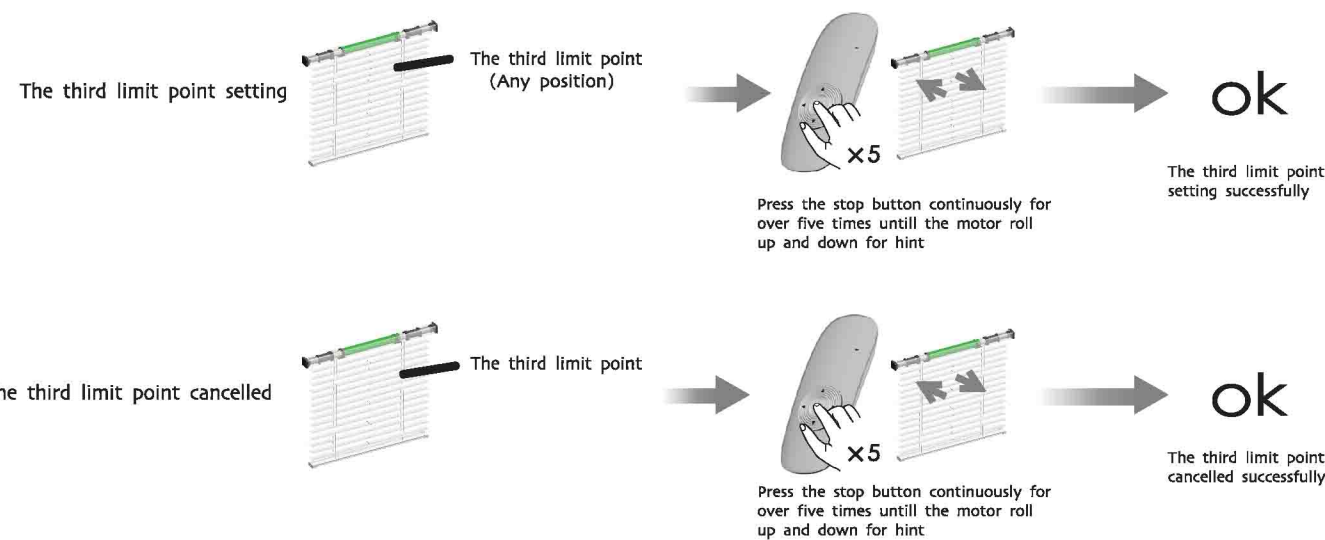
6 Set up/down limit position

! It is invalid when the first limit and second limit are at the same location. New location should be confirmed, and the system won't exit from limit setting function once the second limit wasn't be set. The motor can work for max 7 seconds. The present limit has to be recorded once Power off.



7 The third limit point setting

! After the up limit and down limit setting, you can set the third limit point between them as the half open position. The third limit point will be cancelled as the cancellation of limit and code matching; After the third limit point setting, if you want to set a new third limit, please cancel the previous third limit point.; Limit setting with hint of sound;



Dot-move setting

Switch on

Press emitter's P2 button, sound tip once with reverse tip

Press up button, sound tip once

Press down button, sound tip once

Dot-move setting is ok, sound tip for three times with reverse tip

Repeat setting, function is cancelled

Add emitter

Switch on, sound tip once

Press "a" emitter's P2 button, sound tip once with reverse tip. Then press "a" emitter's P2 again. Sound tip once

Press "b" emitter's P2 button, sound tip for five times with reverse tip

Emitter adding is ok

The time period for POWER ON should be 5 seconds minimum

Cancel the limit

Switch on

Press emitter's P2 button, sound tip once with reverse tip

Press down button, sound tip once

Press emitter's P2 button, sound tip for five times with reverse tip

The limit switch of tubular motor has been deleted successfully

Cancel emitter

Switch on

Press emitter's P2 button, sound tip once with reverse tip

Press stop button, sound tip once

Press emitter's P2 button, sound tip for five times with reverse tip

Cancelling is ok

To clean up the emitter means deleting all the memory of emitter and limit switch in the motor receivers

Common failures and solutions

	Fail-phenomena	Failure causes	Solutions failure recovery
1	Switch on, the drive adapter runs in one-way operation	Setting of limit switch in the motor is uncompleted	Re-setting limit switch
2	Motor starts slowly or not work after connect power	a. Power voltage is slow b. Wiring error c. Overload d. Improper installation	a. Adjust power to rated data b. Check circuit and correct wiring connecting c. Rated torque associated with the installation of the load d. Re-install the motor
3	Motor stops suddenly after running	Check whether meet resistance force	Check whether have redundant stuff in transmission structure
4	Abnormal sound during roller blinds in operation	Outer tube is too long, led the rolling shutter connects with both sides of bracket too tightly	If idler is active, propering make the tube shorter to avoid too tight status.

All controls support 433MHz & 868MHz & 447-7MHz
All controls support 24V & 12V
Specific parameters to the nameplate shall prevail

E:Electronic
Electronic Limit + Built-in Receiver
+ Resistance And Stop Function

DM25DE Tubular Motor

Specification

Technical support

Version No. : A/03

1. 5-channel emitter = single channel emitter x 5
One channel of emitter can control 20 receivers at most at the same time.

2. DM25DE Tubular Motor
One Electronic motor maximum can store 20 channels, over 20 channels, if still need add new channels, it will be repeating covered in turn from last channel.

Please set the limit position before use, as the setting method please see: 'set up/down limit position' as reference.
Group control programme is noneffective; deleting programme, adding programme and setting limit switch is effective

Control range

	L1 Open	L2 Partition	Emission frequency
24V	200m	35m	433.92MHz
12V	200m	35m	

Matchable emitters

For the emitters without setting button like DC316, you can press up button and stop button at the same time to work as the same function as setting button.

Button specification

Attention