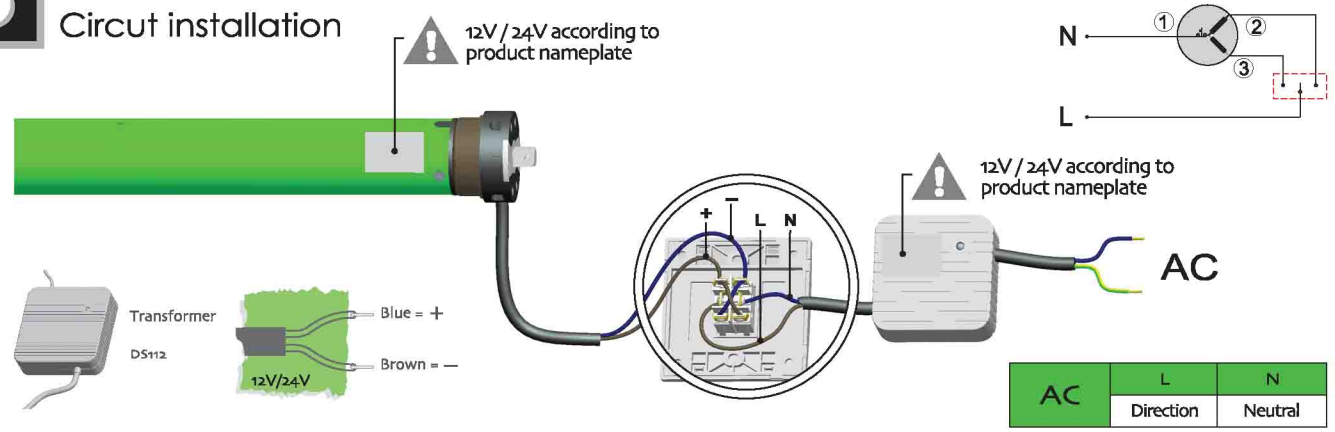


5

Circuit installation



DC Standard Tubular Motor Specification



DS: DC Standard
Mechanic Limit + DC Motor

By DM25DS
DM35DS
DM45DS
DM59DS

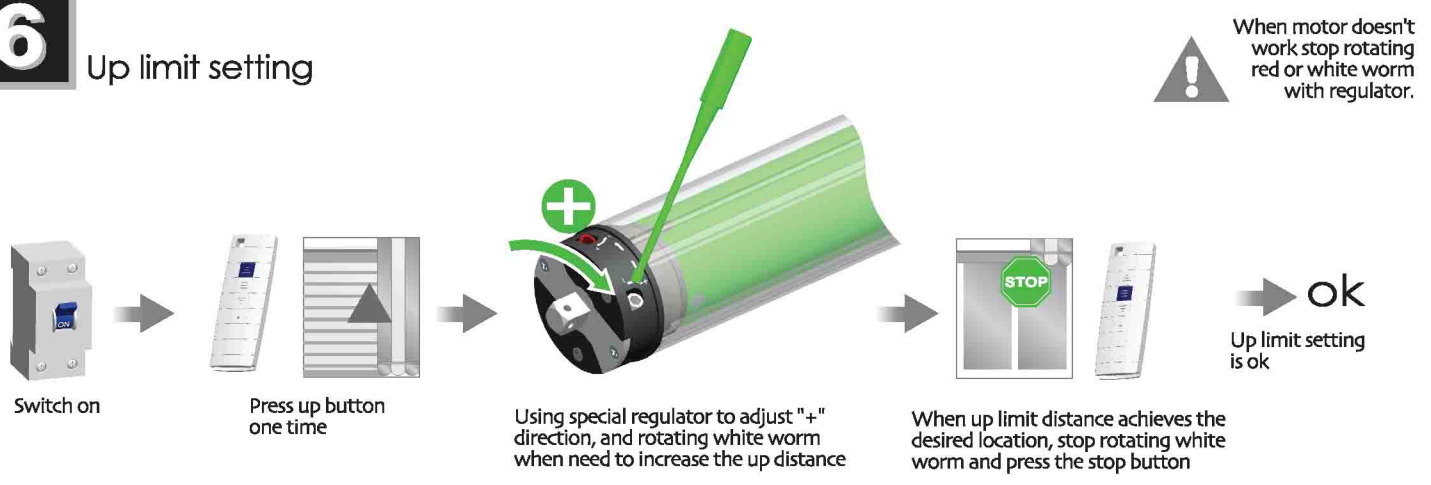


Version No. :A/02

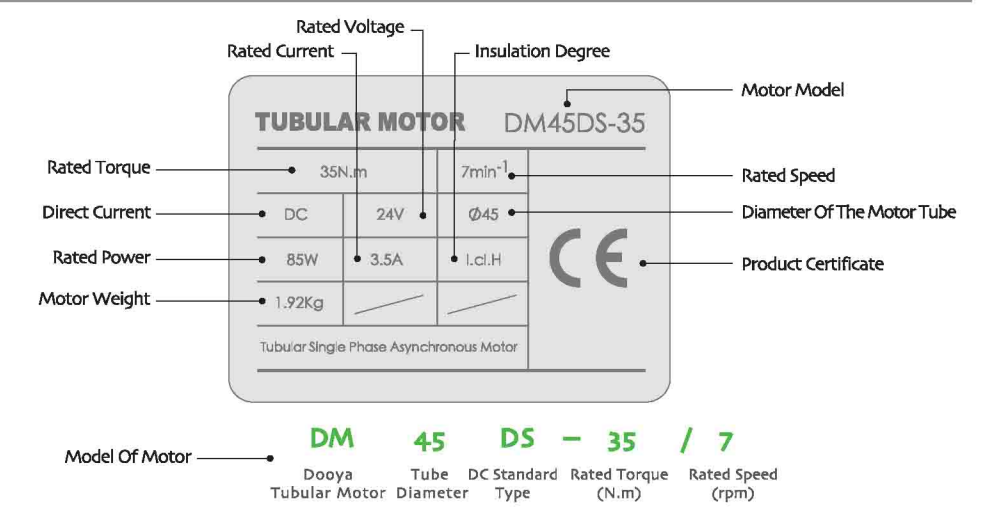
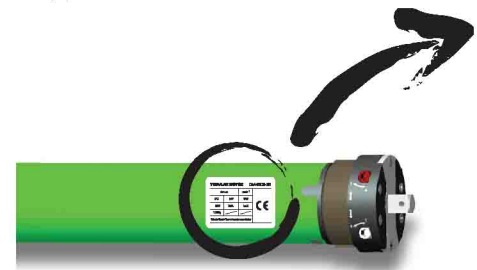


6

Up limit setting

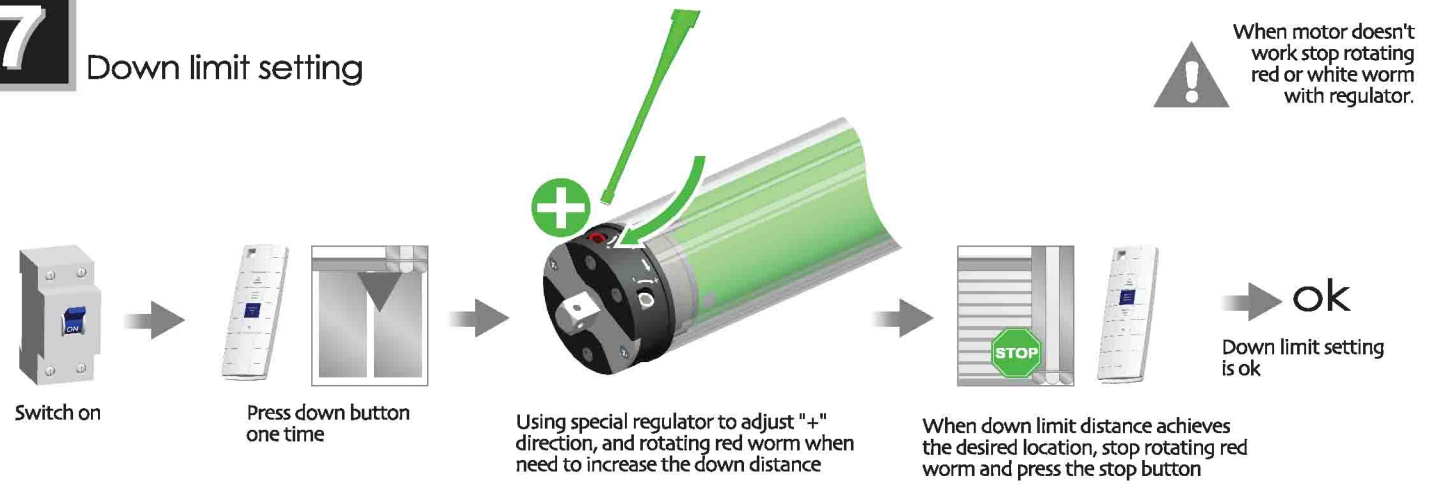


T Product Nameplate

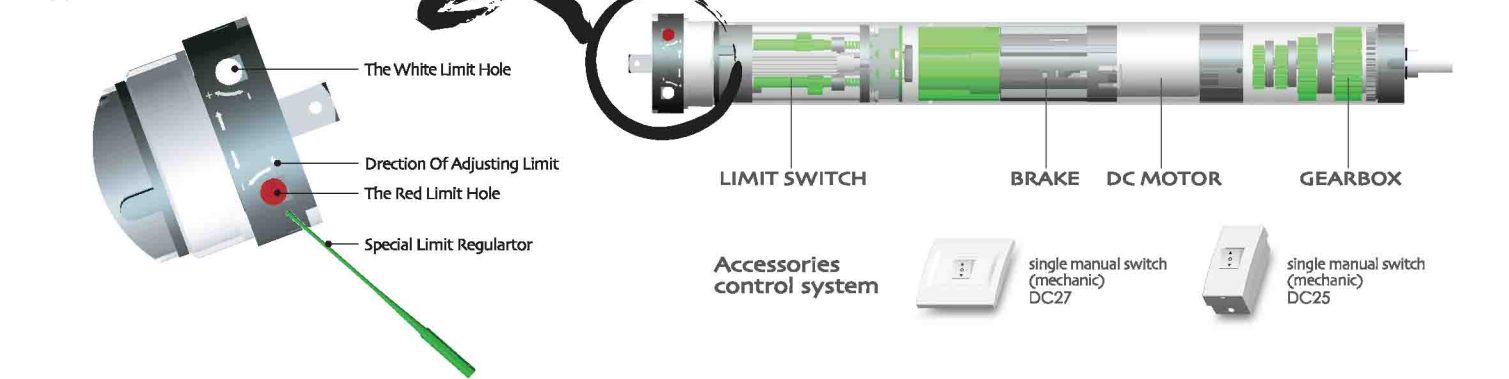


7

Down limit setting



T Instruction Of The Motor



!

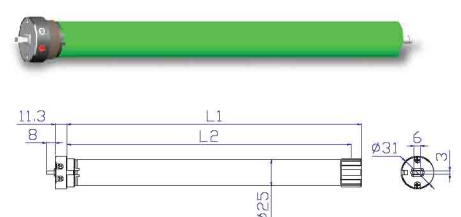
Common failures and solutions

Attention

	Fail-phenomena	Failure causes	solutions failure recovery
1	Switch on, the drive adapter runs in one-way operation	Inside limit switch of motor doesn't open	Crown running one circle in the opposite direction of the drive adapter, then it works
2	motor starts slowly or not work after connect power	a. Power voltage is slow b. Wiring error c. Overload d. Improper installation	a. Adjust power to rated data b. Check circuit and correct wiring connecting c. Rated torque associated with the installation of the load d. Re-install the motor
3	Motor stops suddenly after running	Motor stops suddenly after running	Motor will automatically resume work after 20 minutes cooling
4	Abnormal sound during roller blinds in operation	Outer tube is too long, led the rolling shutter connects with both sides of bracket too tightly	if idler is active, propering make the tube shorter to avoid too tight status.

A Technical data

DM25DS



	Rated Torque (N.m)	Rated Speed (rpm)	Tube Diameter (mm)	Rated Voltage (V)	Rated Power Input (W)	Rated Current (A)	Degree of Protection (IP)	Max Number of Turns (turn)	L1 / L2 (mm)
12V									
DM25DS - 0.7/34	0.7	34	25	12	9.0	0.76	44	26	277/267
24V									
DM25DS - 0.7/34	0.7	34	25	24	9.4	0.39	44	26	277/267

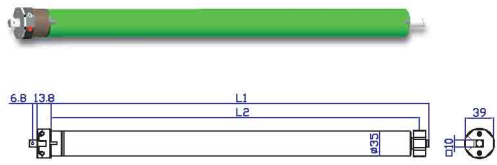
DC motor is allowed to work for a longer time.



Technical data

Technical Support

DM35DS



	Rated Torque (N.m)	Rated Speed (rpm)	Tube Diameter (mm)	Rated Voltage (V)	Rated Power Input (W)	Rated Current (A)	Degree of Protection (IP)	Max Number of Turns (turn)	L1 / L2 (mm)
12V					Product Certificate RoHS				
DM35DS - 3/24	3	24	35	12	33.7	3	44	30	507/495
DM35DS - 6/12	6	12	35	12	37.6	3.5	44	30	507/495
DM35DS - 6/24	6	24	35	12	42.7	4	44	30	507/495
24V					Product Certificate RoHS				
DM35DS - 3/24	3	24	35	24	44.3	1.9	44	30	507/495
DM35DS - 6/12	6	12	35	24	45	1.8	44	30	507/495
DM35DS - 6/24	6	24	35	24	59.2	2.6	44	30	507/495

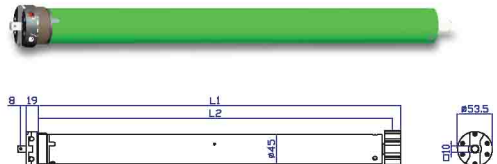
■ DC motor is allowed to work for a longer time.



Technical data

Technical Support

DM45DS

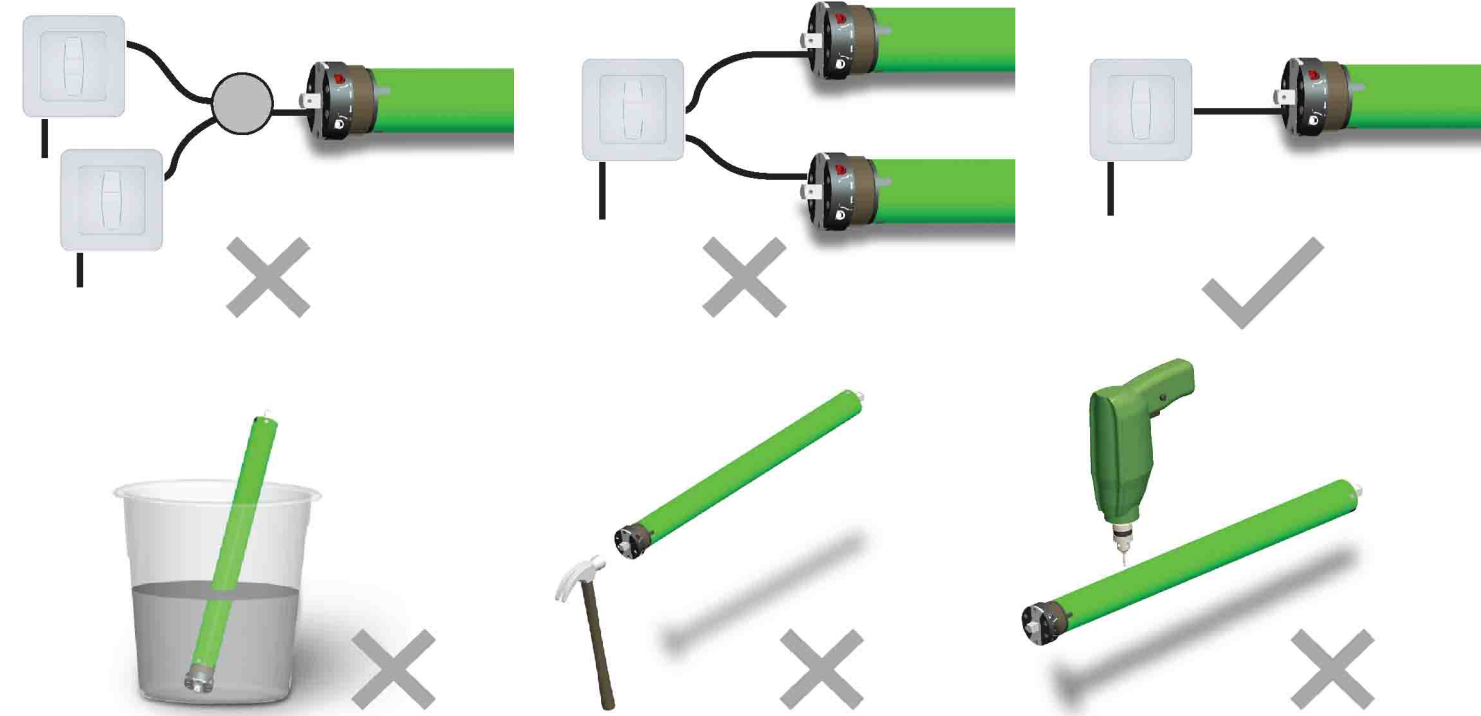


	Rated Torque (N.m)	Rated Speed (rpm)	Tube Diameter (mm)	Rated Voltage (V)	Rated Power Input (W)	Rated Current (A)	Degree of Protection (IP)	Max Number of Turns (turn)	L1 / L2 (mm)
12V					Product Certificate RoHS				
DM45DS - 20/14	20	14	45	12	52.8	4.4	44	22	555/527
DM45DS - 35/7	35	7	45	12	84	7	44	22	555/527
24V					Product Certificate RoHS				
DM45DS - 20/14	20	14	45	24	50.9	2.2	44	22	555/527
DM45DS - 35/7	35	7	45	24	85	3.5	44	22	555/527

■ DC motor is allowed to work for a longer time.



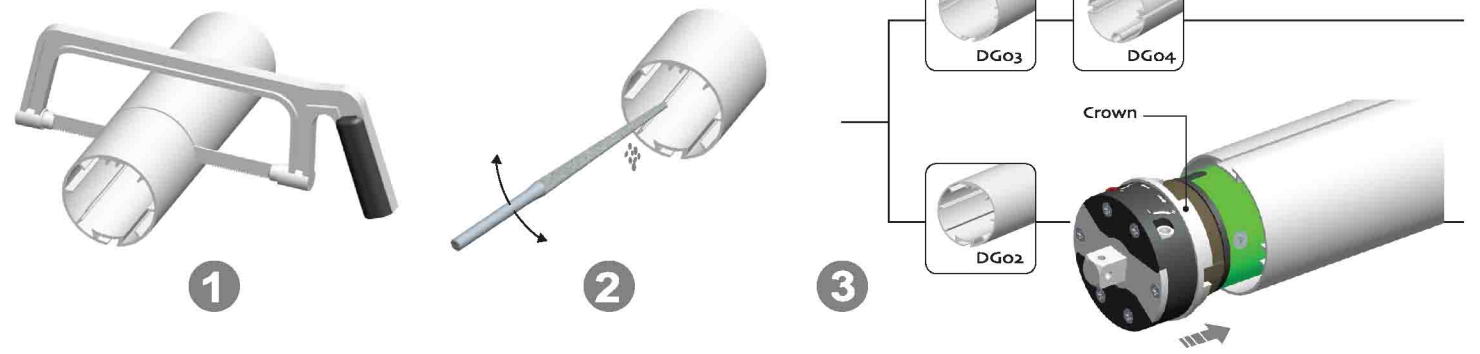
Attention



- Standard DC motor can't use with remote control
- 12V battery is only for 12V 25mm series
- DC motor is only use with DC switch, it can't use with normal switch

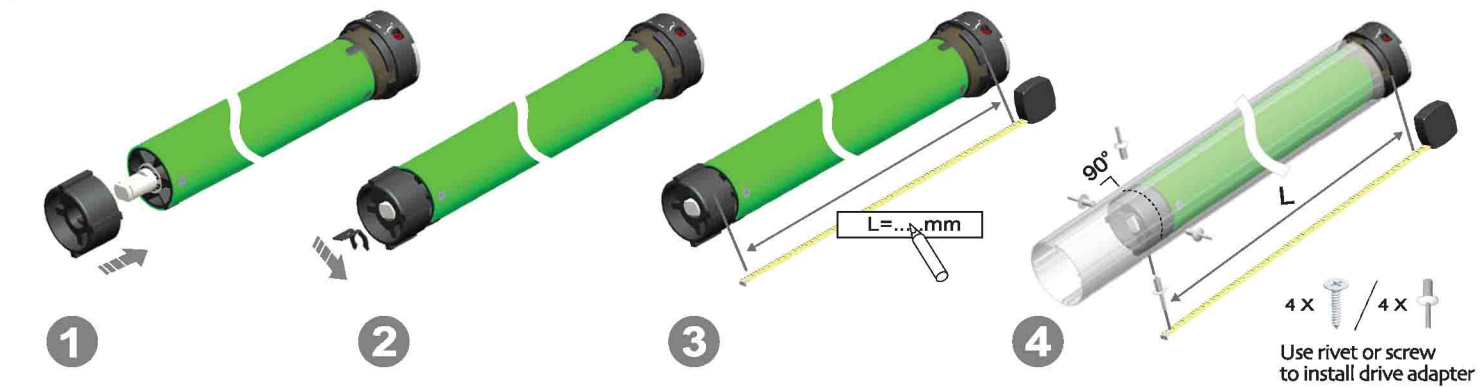
1

Crown installation



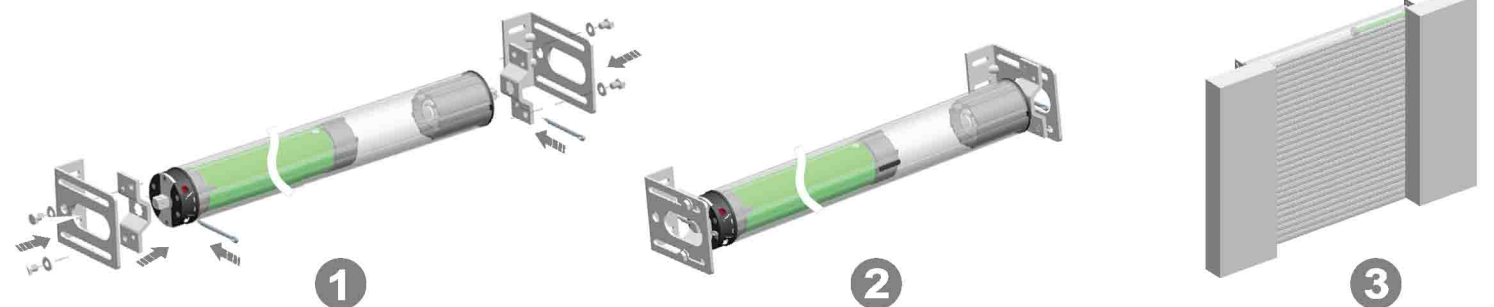
2

Drive adapter installation



3

Bracket installation A



4

Bracket installation B

