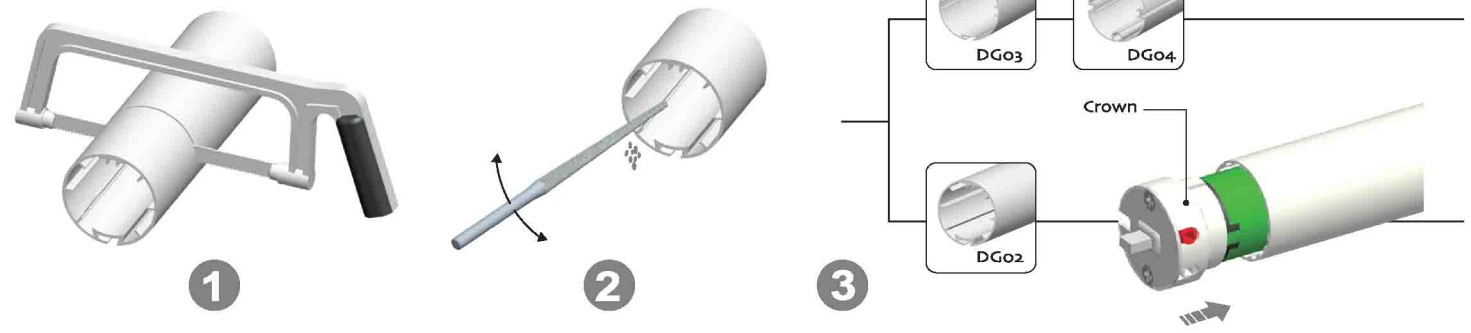
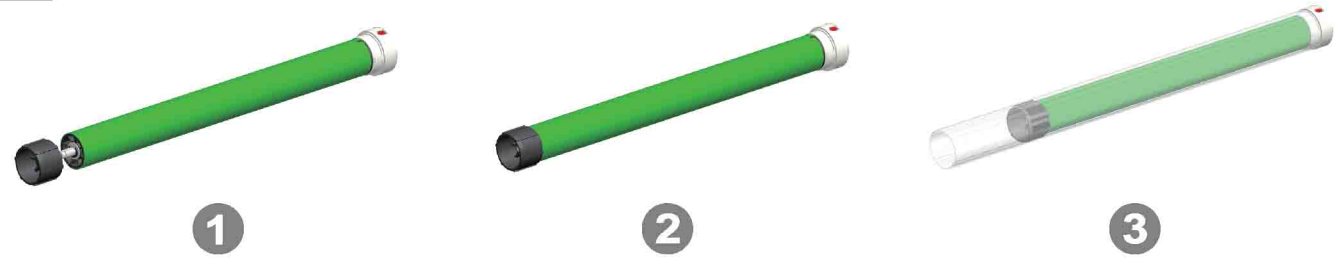


1 Crown installation



2 Drive adapter installation



3 Bracket installation



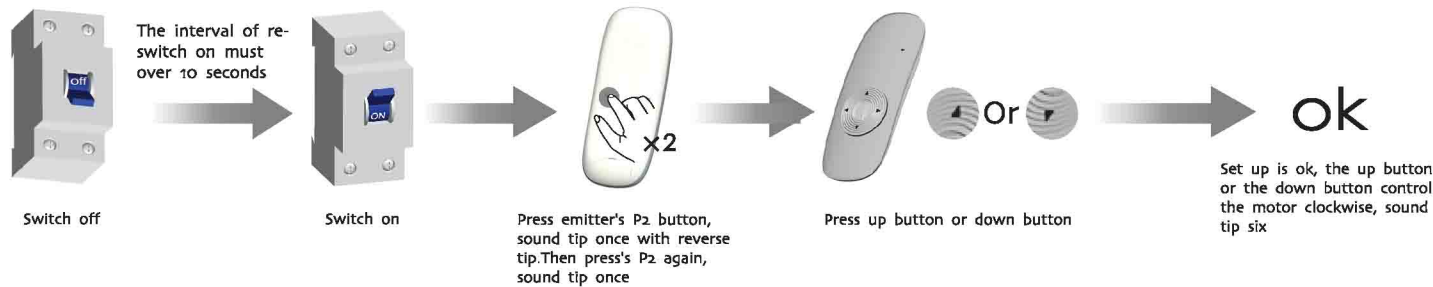
4 Rechargeable signal



5 Setting up(1)

! Delete all the datas of the motor and the new emitter has been programmed

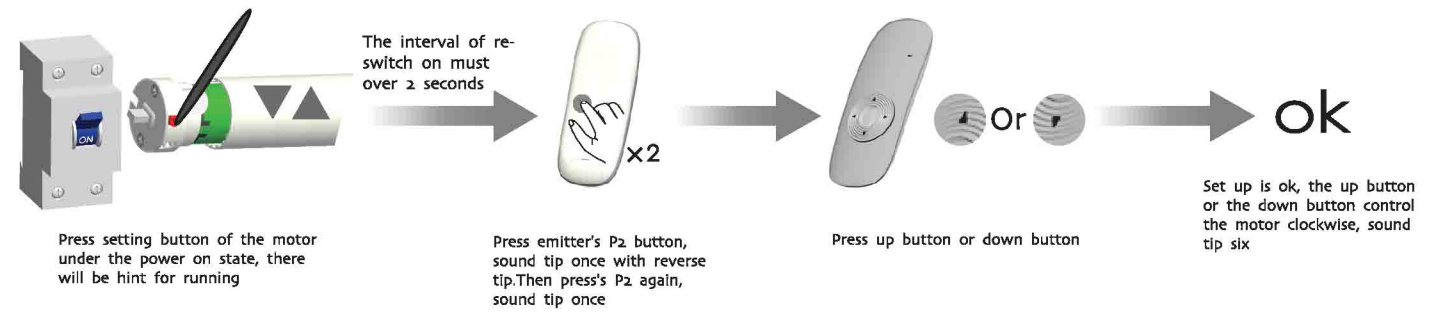
! The interval of each button must within 10 seconds of resetting, otherwise the system will restore the original state



Setting up(2)

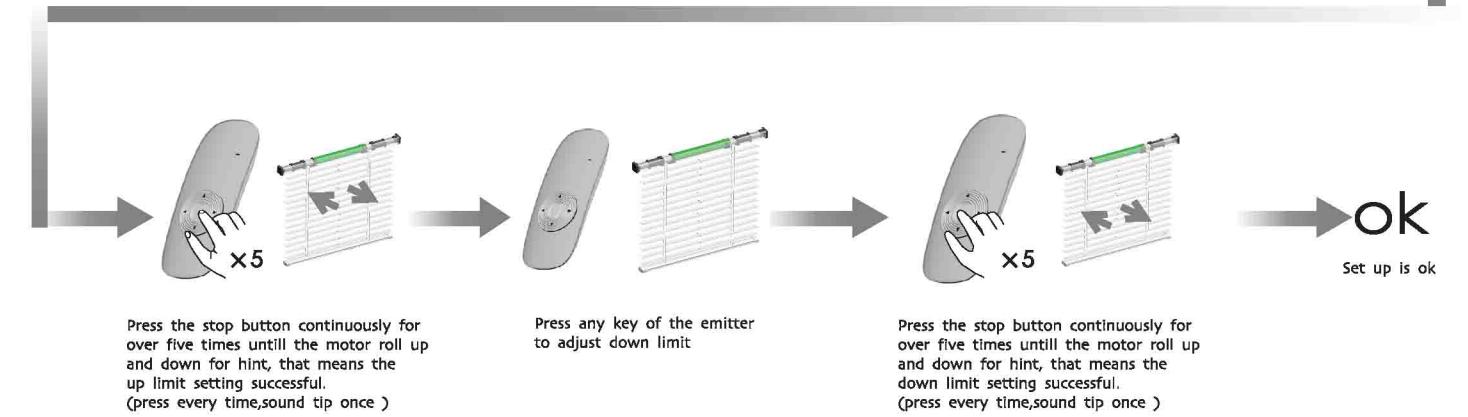
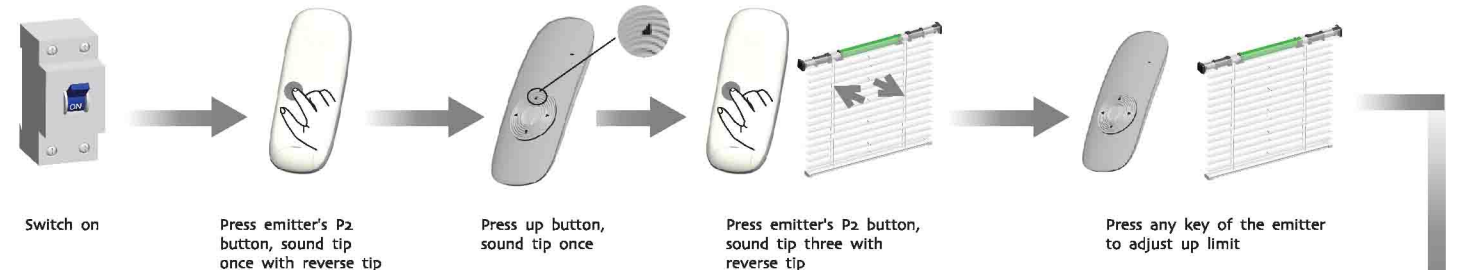
! Delete all the datas of the motor and the new emitter has been programmed

! The interval of each button must within 10 seconds of resetting, otherwise the system will restore the original state



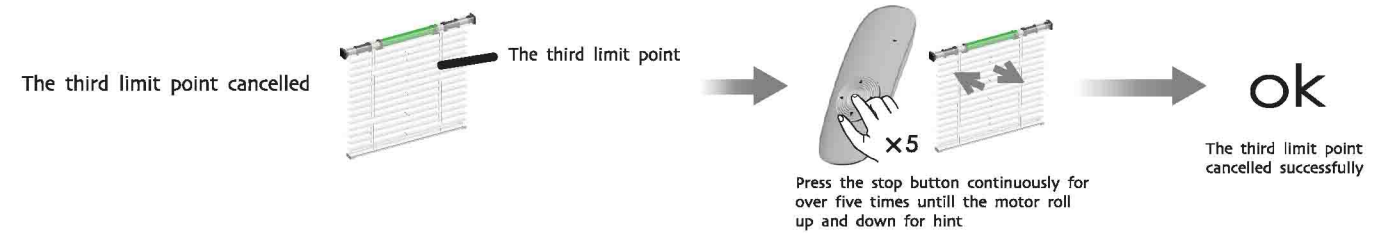
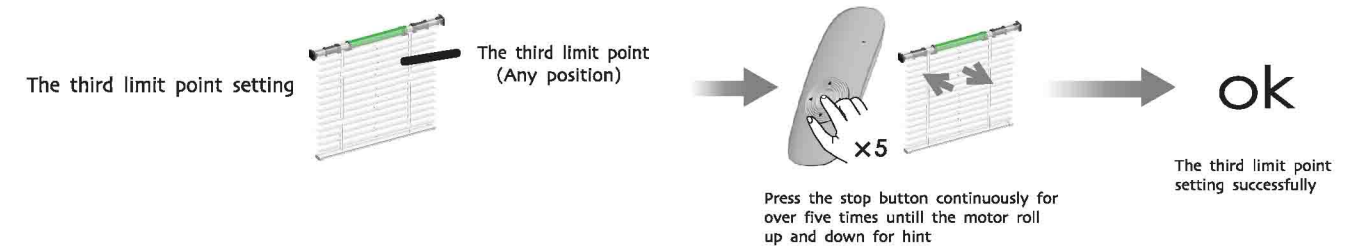
6 Set up/down limit position

! It is invalid when the first limit and second limit are at the same location. New location should be confirmed, and the system won't exit from limit setting function once the second limit wasn't set. The motor can work for max 7 seconds. The present limit has to be recorded once Power off.



7 The third limit point setting

! After the up limit and down limit setting, you can set the third limit point between them as the half open position. The third limit point will be cancelled as the cancellation of limit and code matching; After the third limit point setting, if you want to set a new third limit, please cancel the previous third limit point. Limit setting with hint of sound;



A Additional Function

Dot-move setting

Switch on

Press emitter's P2 button, sound tip once with reverse tip

Press up button, sound tip once

Press down button, sound tip for one time with reverse tip

ok

Dot-move setting is ok, sound tip for three times

Repeat setting, function is cancelled

A Additional Function

Add emitter

Switch on, sound tip once

Press "a" emitter's P2 button, sound tip once with reverse tip. Then press "a" emitter's P2 again. Sound tip once

Press "b" emitter's P2 button, sound tip for five times

ok

Emitter adding is ok

The time period for POWER ON should be 5 seconds minimum

A Additional Function

Cancel the limit

Switch on

Press emitter's P2 button, sound tip once with reverse tip

Press down button, sound tip once

Press emitter's P2 button, sound tip for two times with reverse tip

ok

The limit switch of tubular motor has been deleted successfully

A Additional Function

Cancel emitter

Switch on

Press emitter's P2 button, sound tip once with reverse tip

Press stop button, sound tip once

Press emitter's P2 button, sound tip for four times with reverse tip

ok

Cancelling is ok

To clean up the emitter means deleting all the memory of emitter and limit switch in the motor receivers

A Additional Function

Rechargeable description

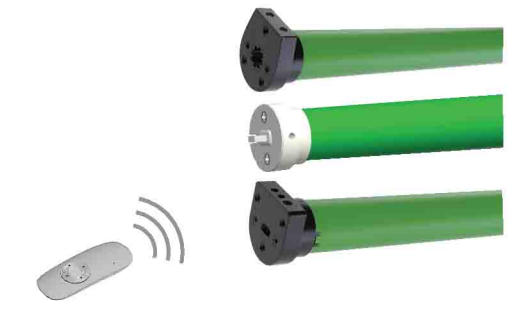
The motor have a built-in battery, used DC782 transformer, when battery power supply shortage, insert charger ,charger lighth show red light. batteries is full When the red light turned to green

433MHz 868MHz CE

All controls support 433MHz & 868MHz
All controls support 8.4V
Specific parameters to the nameplate shall prevail

E:Electronic
Electronic Limit + Built-in Receiver
+ Resistance And Stop Function

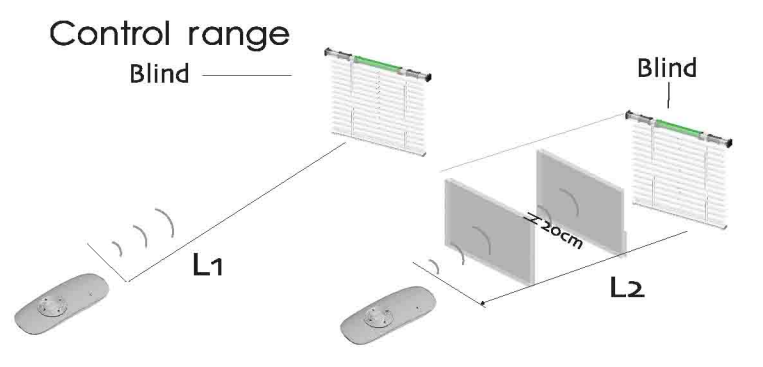
DM25LE Tubular Motor Specification



Version No. : A/01

T Technical Support

- 5-channel emitter = single channel emitter x 5
One channel of emitter can control 20 receivers at most at the same time.
- DM25LE Tubular Motor
One Electronic motor maximum can store 20 channels, over 20 channels, if still need add new channels, it will be repeating covered in turn from second channel.



	L1 Open	L2 Partition	Emission frequency
8.4V	200m	35m	433.92MHz

Please set the limit position before use, as the setting method please see: 'set up/down limit position' as reference.
Group control programme is noneffective; deleting programme, adding programme and setting limit switch is effective

T Technical Support

Matchable emitters

For the emitters without setting button like DC316, you can press up button and stop button at the same time to work as the same function as setting button.

Button specification

DM25LE

Setting button

It should be connected to a power adapter

Setting button

UP
STOP
DOWN

Setting button

Attention

