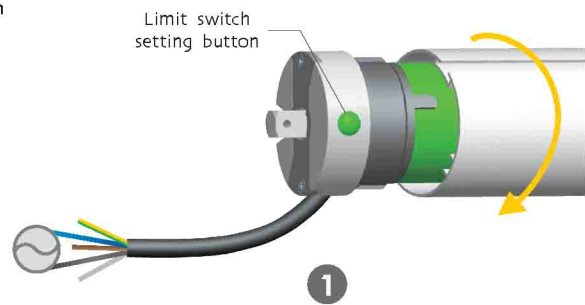




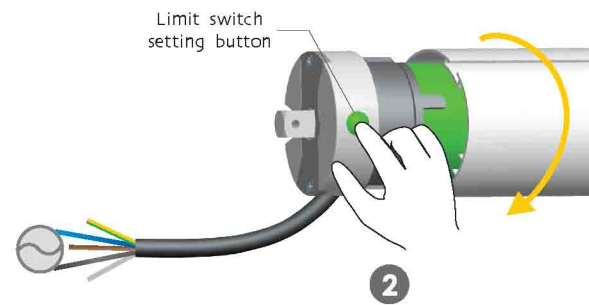
Additional Function

### Clockwise rotation Limit switch with setting



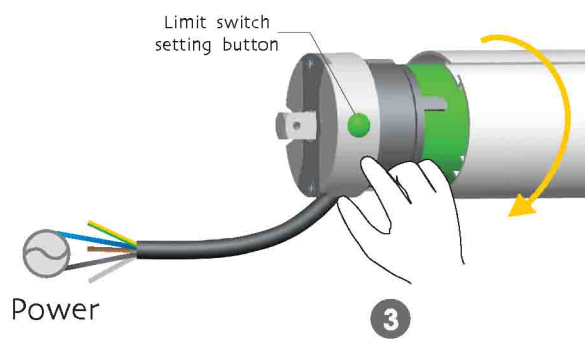
Power

When the black wire and blue wire connect with power, the drive adapter will rotate in a clockwise direction



Power

When the drive adapter rotate in a clockwise direction or stop (the black wire and blue wire connect with power), press the setting button in the limit head, the motors will rotate in a clockwise direction



Power

Release the setting button in the limit head namely confirm clockwise limit position

Repeat step 2 and step 3 namely can accurate setting clockwise limit position



CE

All controls support 230V/50Hz & 120V/60Hz & 220V/60Hz  
Specific parameters to the nameplate shall prevail



**B: Button Electronic**  
Electronic Limit +  
Resistance and stop function



### B/BK-type motors Tubular Motor Specification

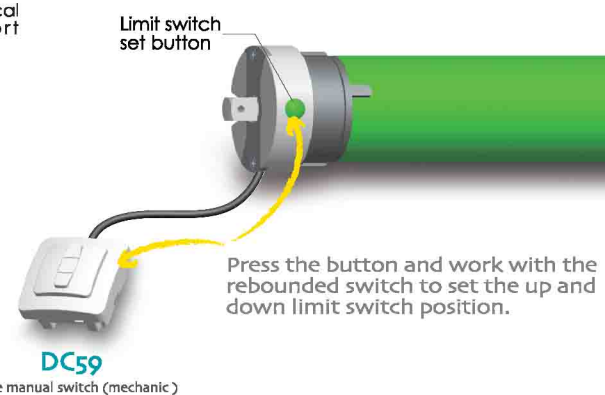
Version No. : A/05



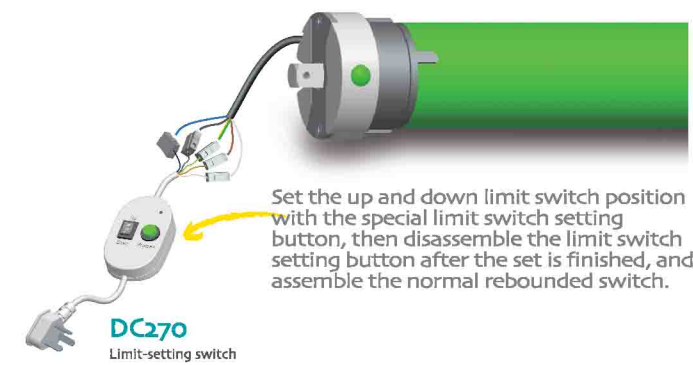
Technical Support

### Setting limit switch method

Setting limit switch method 1

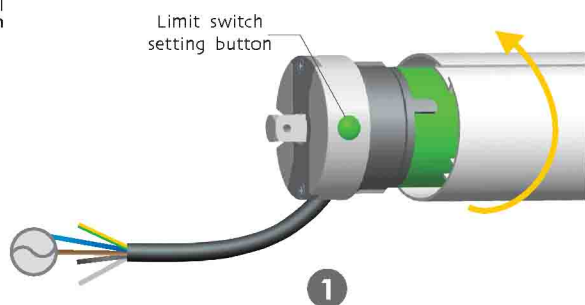


Setting limit switch method 2



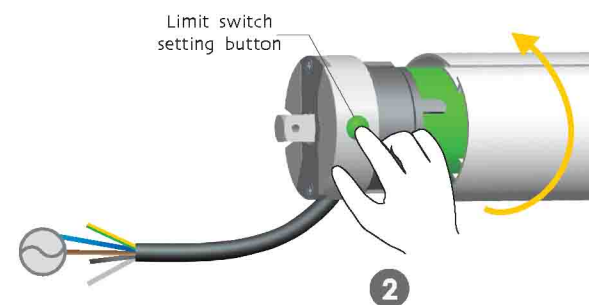
Additional Function

### Counter-clockwise rotation Limit switch with setting



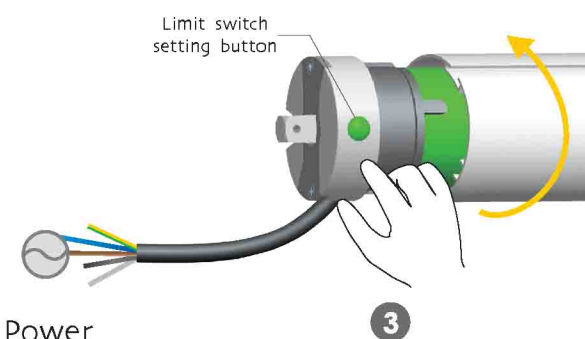
Power

When the brown wire and blue wire connect with power, the drive adapter will rotate in a reverse direction



Power

When the drive adapter rotate in a reverse direction or stop (the brown wire and blue wire connect with power), press the setting button in the limit head, the motors will rotate in a reverse direction



Power

Release the setting button in the limit head namely confirm reverse limit position

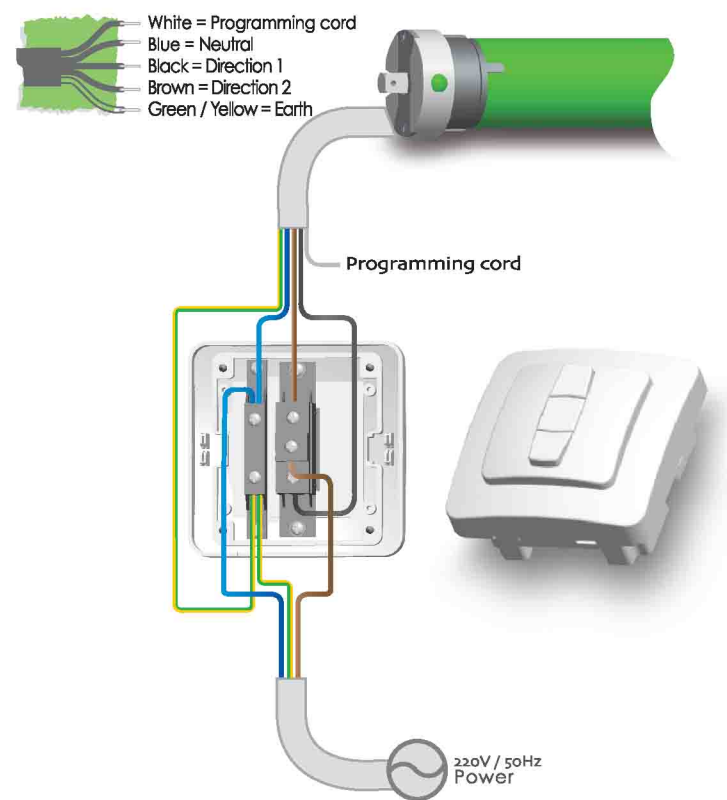
Repeat step 2 and step 3 namely can accurate setting reverse limit position



Technical Support

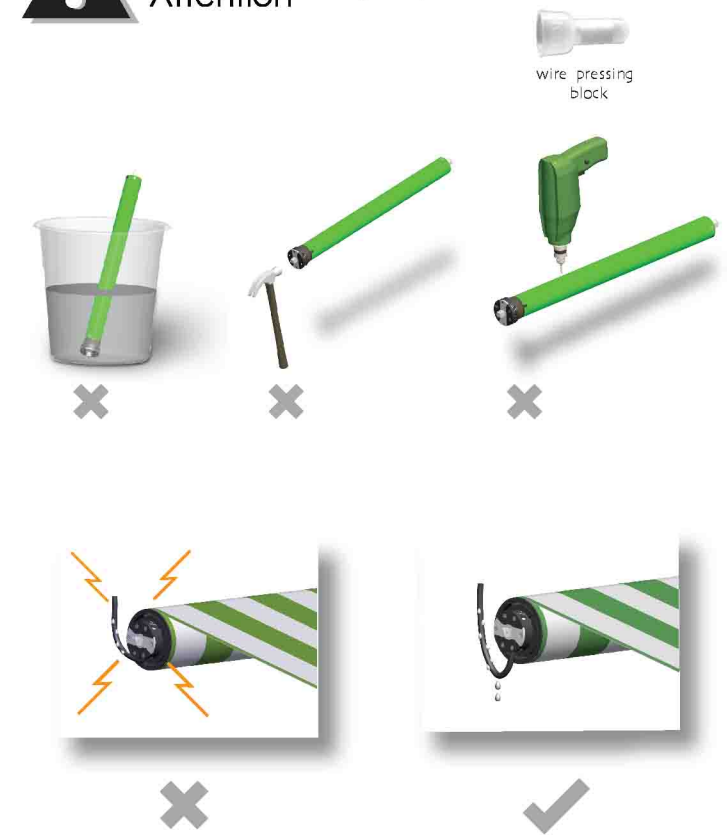
### Circuit installation

White = Programming cord  
Blue = Neutral  
Black = Direction 1  
Brown = Direction 2  
Green / Yellow = Earth

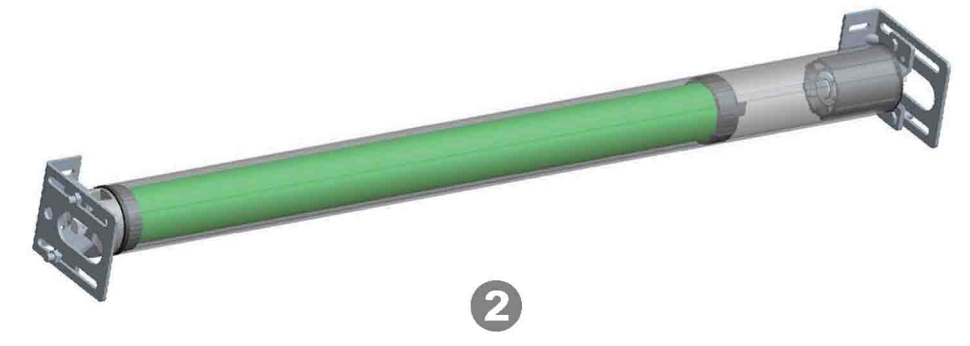
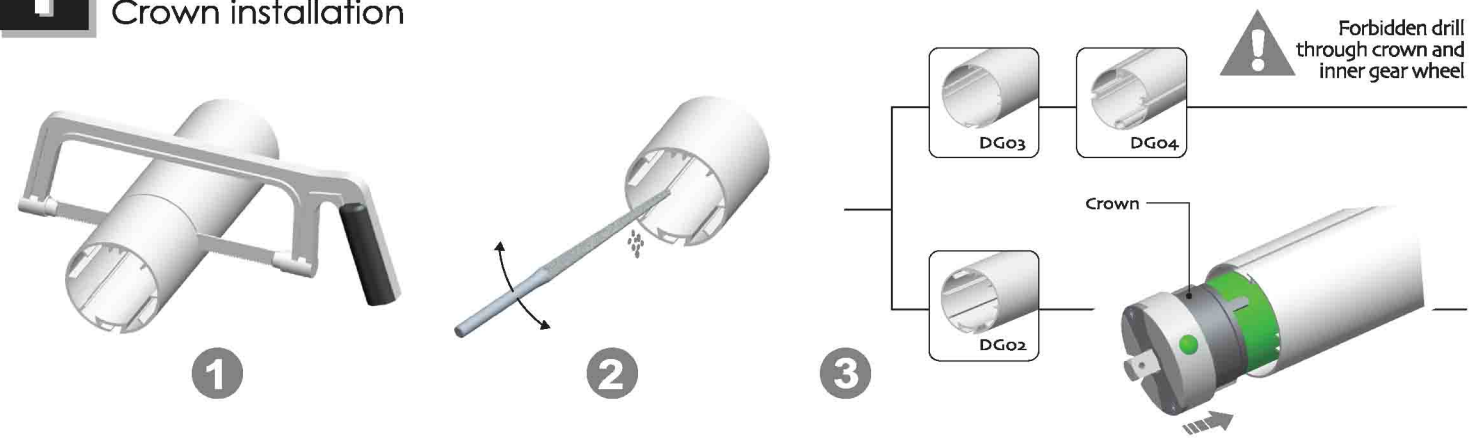


### Attention

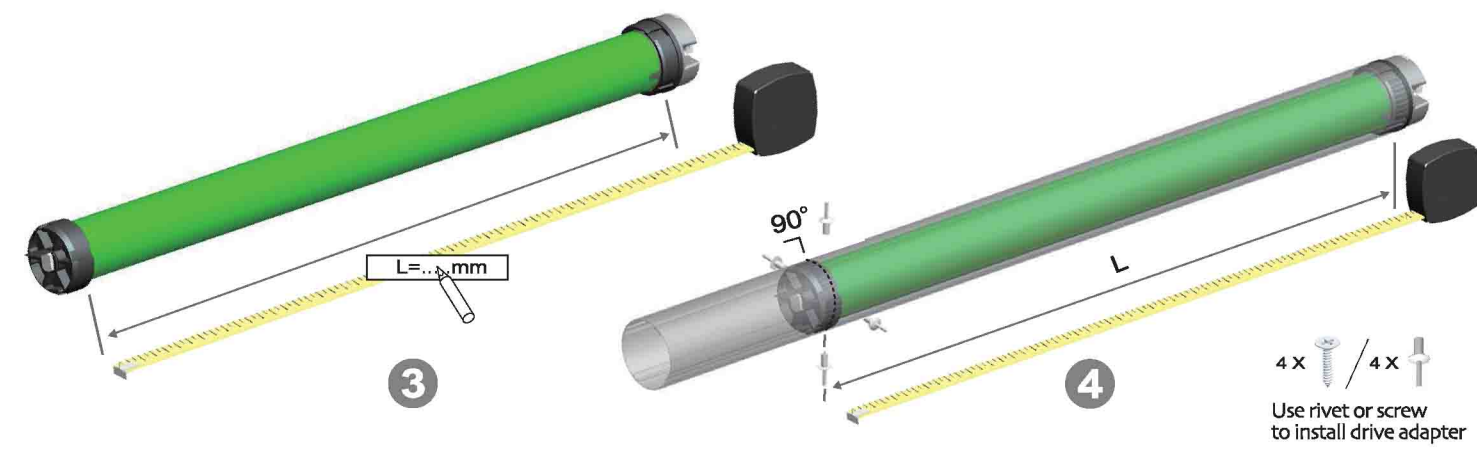
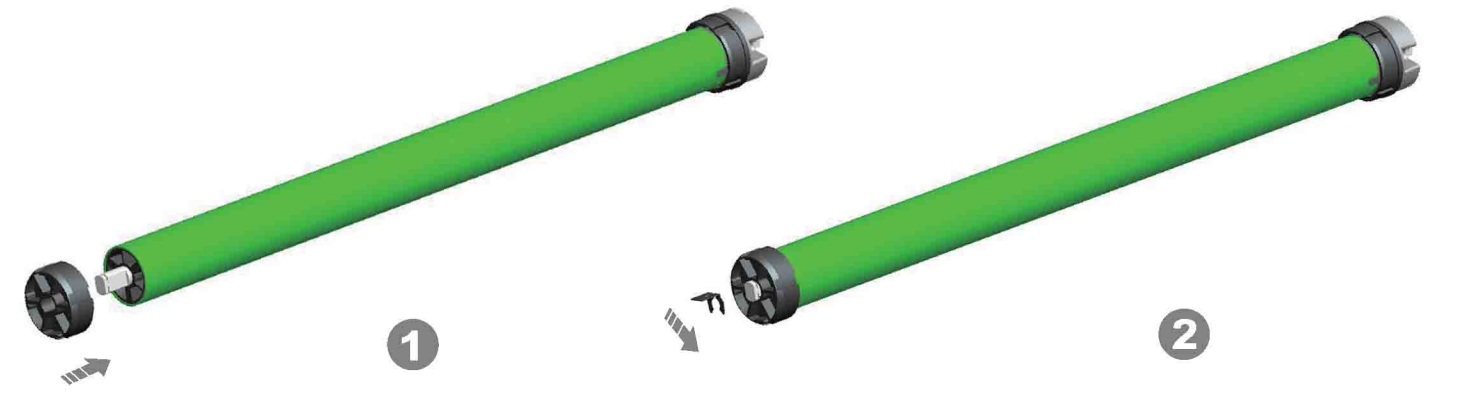
You must isolate the extra wires. the wire pressing block in the accessory bag is available for this usage, or you can use other method.



# 1 Crown installation



# 2 Drive adapter installation



# 3 Bracket installation

