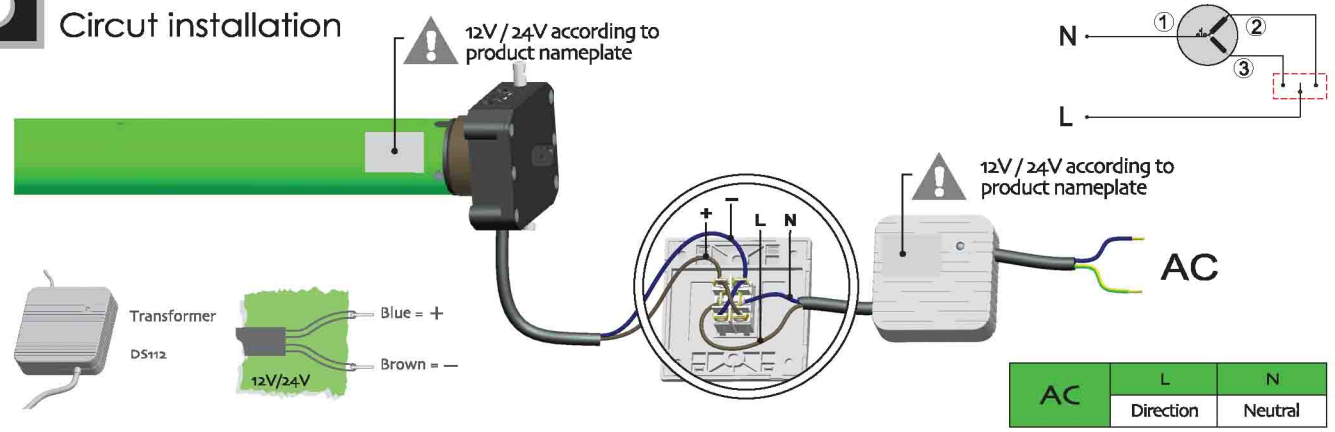


# 5

## Circuit installation



## DC Manual Tubular Motor Specification

DM : DC Manual  
Mechanic Limit + Manual + DC Motor

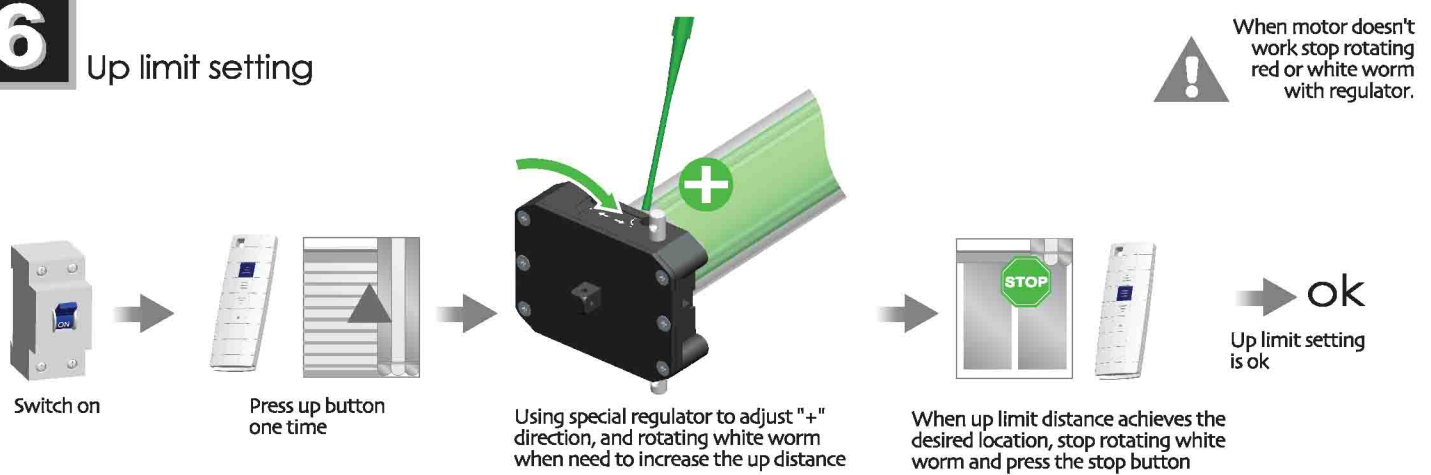
By DM25DM  
DM35DM  
DM45DM



Version No. : A/00

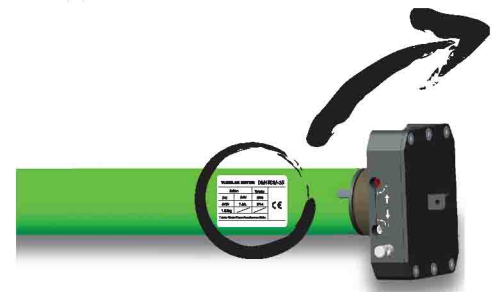
# 6

## Up limit setting



## T Technical Support

## Product Nameplate

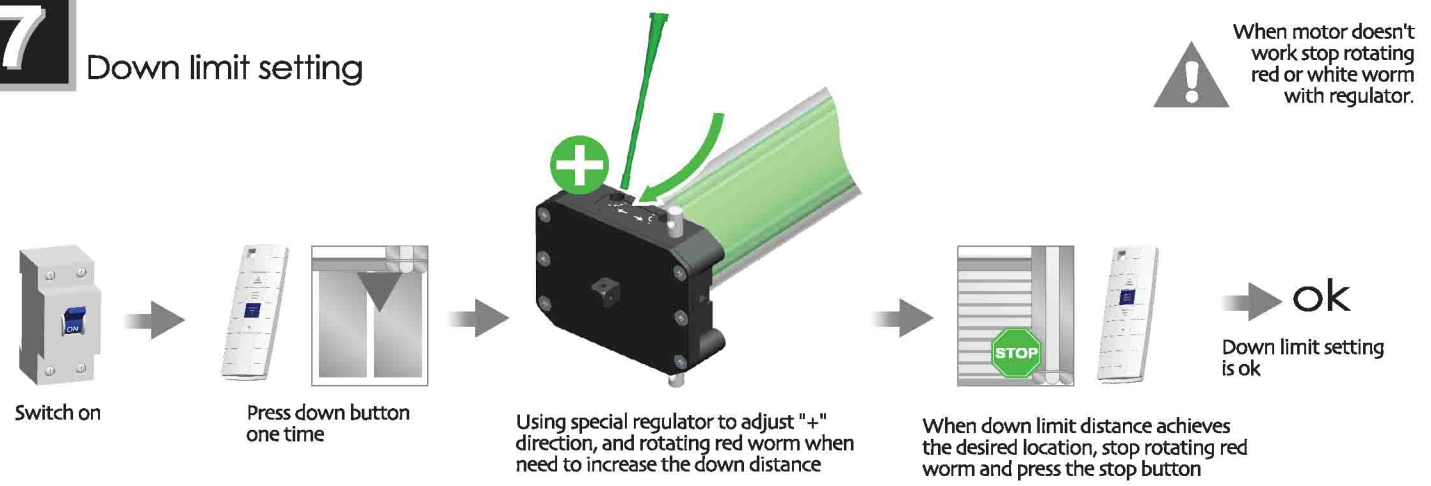


Rated Voltage	24V		Insulation Degree	IP44		Motor Model	TUBULAR MOTOR DM45DM-35	
Rated Current	7.0A		Rated Torque	35Nm		Rated Speed	7r/min	
Rated Power	84W		Direct Current	DC		Diameter Of The Motor Tube	Ø45	
Motor Weight	1.92kg		Product Certificate	CE		Tubular Single Phase Asynchronous Motor		

Model Of Motor: **DM 45 DM - 35 / 7**  
 Tubular Motor Tube DC Manual Rated Torque Rated Speed  
 Diameter Type (N.m) (rpm)

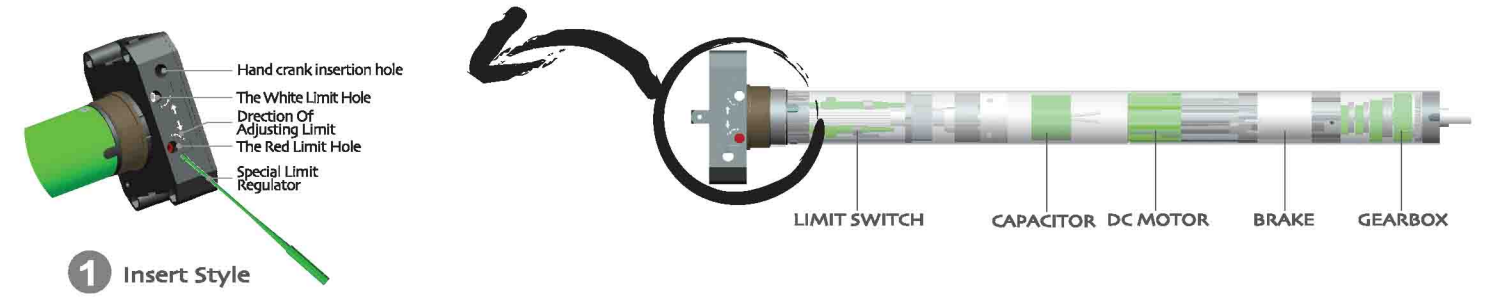
# 7

## Down limit setting



## T Technical Support

## Instruction Of The Motor

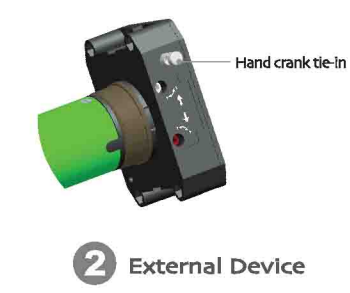


# !

## Common failures and solutions

Attention

	Fail-phenomena	Failure causes	solutions failure recovery
1	Switch on, the drive adapter runs in one-way operation	Inside limit switch of motor doesn't open	Crown running one circle in the opposite direction of the drive adapter, then it works
2	motor starts slowly or not work after connect power	a. Power voltage is low b. Wiring error c. Overload d. Improper installation	a. Adjust power to rated data b. Check circuit and correct wiring connecting c. Rated torque associated with the installation of the load d. Re-install the motor
3	Motor stops suddenly after running	Motor stops suddenly after running	Motor will automatically resume work after 20 minutes cooling
4	Abnormal sound during roller blinds in operation	Outer tube is too long, led the rolling shutter connects with both sides of bracket too tightly	if idler is active, propering make the tube shorter to avoid too tight status.

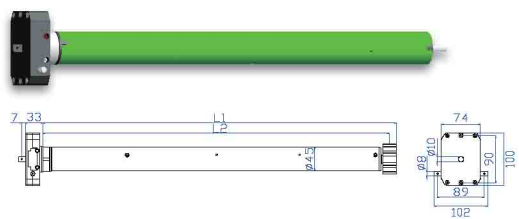




Technical Support

# Technical data

## DM45DM

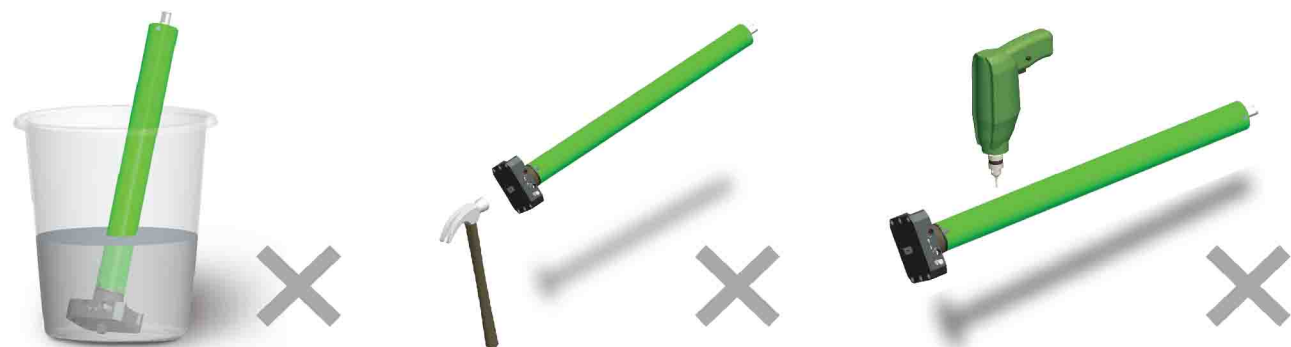
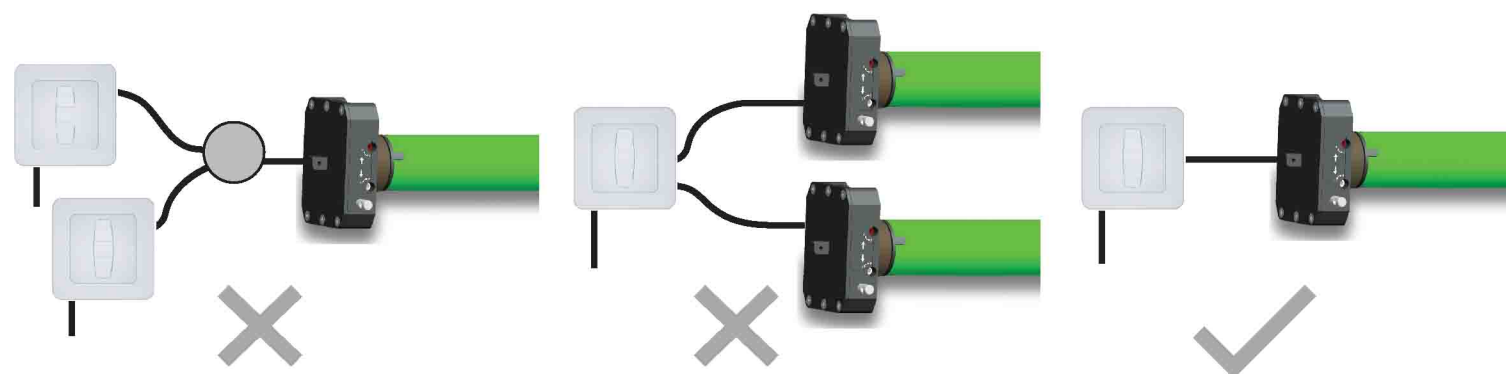


	Rated Torque (N.m)	Rated Speed (rpm)	Tube Diameter (mm)	Rated Voltage (V)	Rated Power Input (W)	Rated Current (A)	Degree of Protection (IP)	Max Number of Turns (turn)	L <sub>1</sub> / L <sub>2</sub> (mm)
<b>12V</b>									
DM45DM- 20/14	20	14	45	12	52.8	4.4	44	22	555/527
DM45DM- 35/7	35	7	45	12	84	7	44	22	555/527
<b>24V</b>									
DM45DM- 20/14	20	14	45	24	50.9	2.2	44	22	555/527
DM45DM- 35/7	35	7	45	24	85	3.5	44	22	555/527

■ DC motor is allowed to work for a longer time.



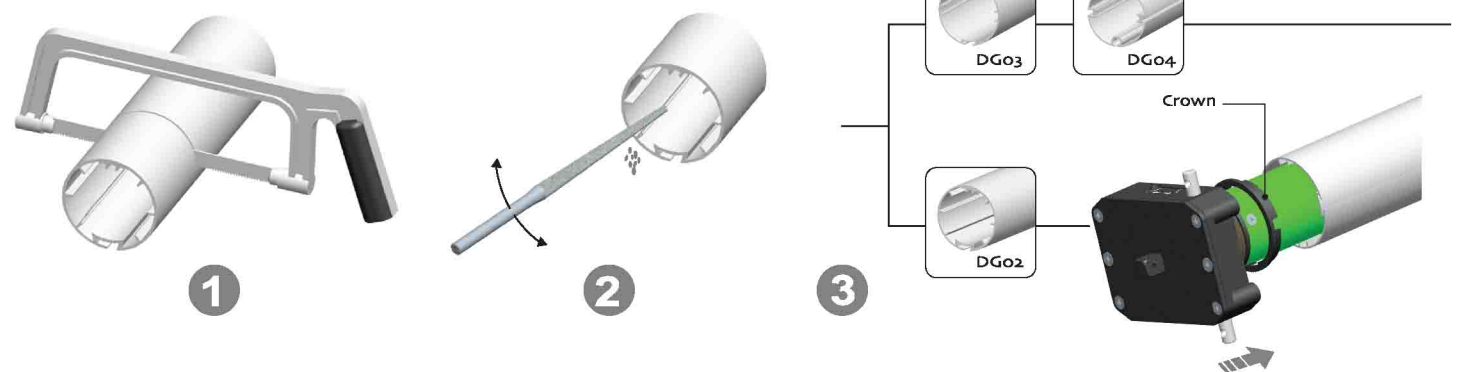
## Attention



- 1 Standard DC motor can't use with remote control
- 2 12V battery is only for 12V 25mm series
- 3 DC motor is only use with DC switch, it can't use with normal switch

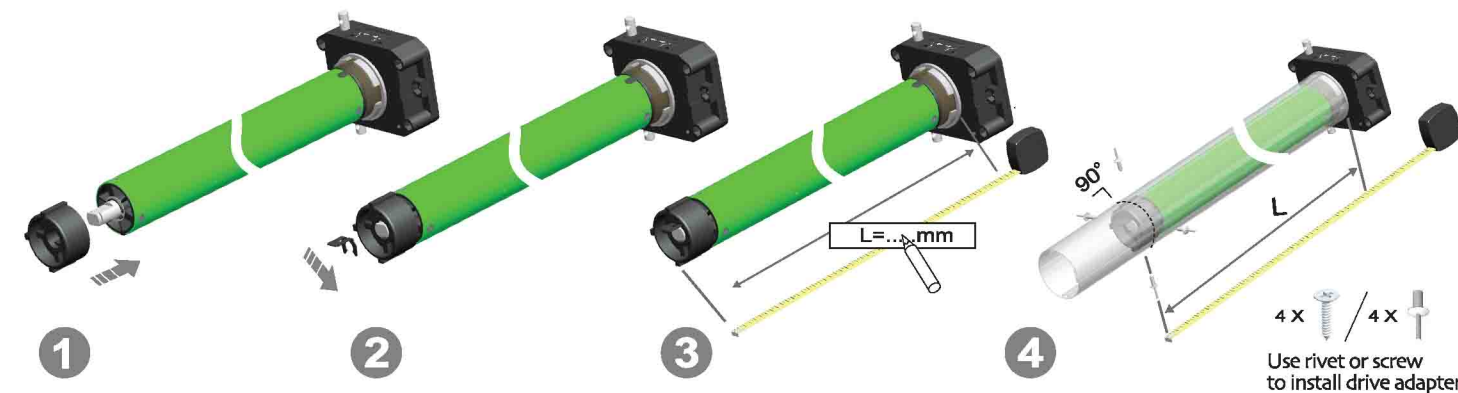
# 1

## Crown installation



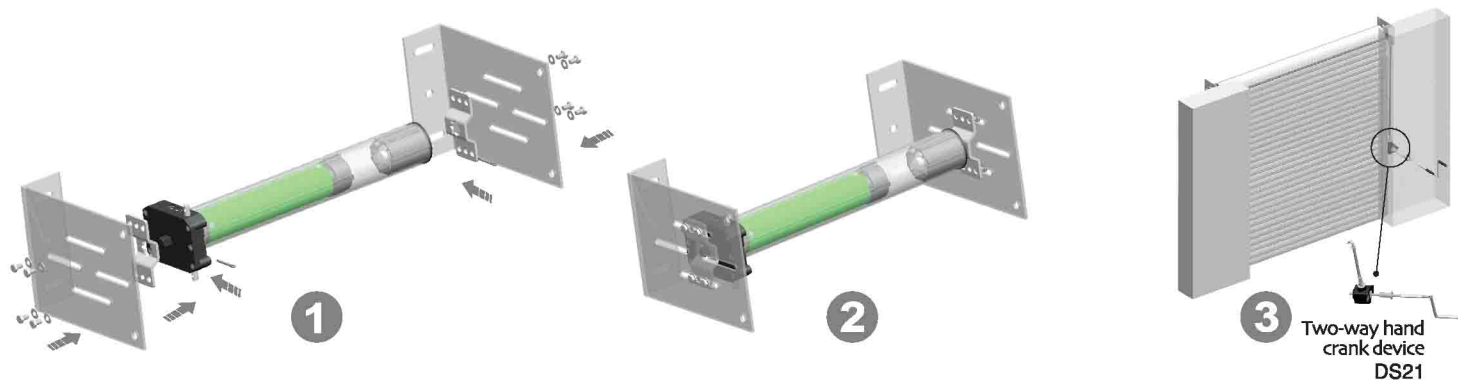
# 2

## Drive adapter installation



# 3

## Bracket installation A



# 4

## Bracket installation B

