



Matchable DC115B set up

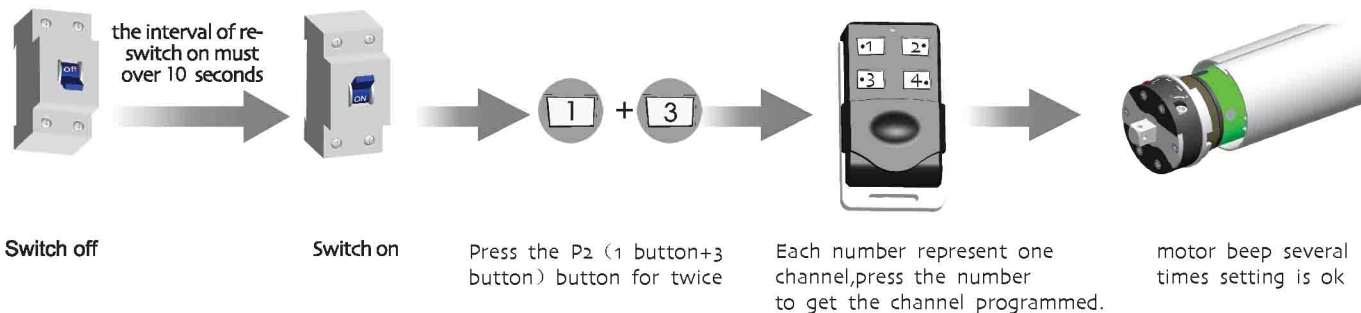


Each channel should be programmed separately. continually press the programmed channel button, the motor move clockwise, stop and move anticlockwise. Control the motor depend on you needs.



One receiver store 200 emitters channels at most, and one channel of emitter can control 20 receivers at most.

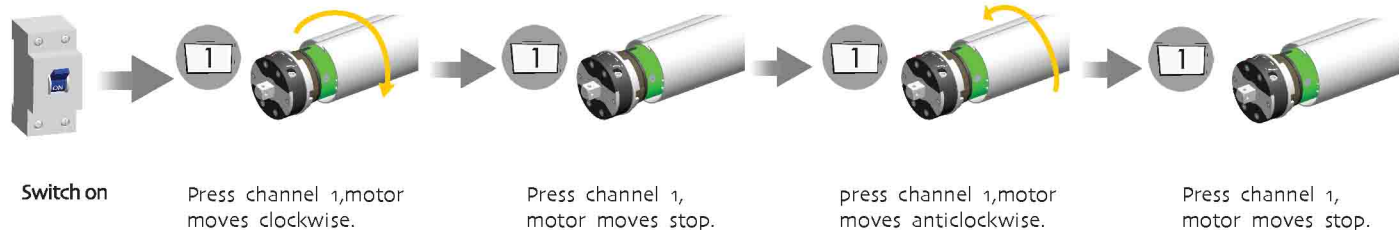
Additional Function



Motor control



When the emitter control motor move upwards during using the DC115B, it is equal to press the emitter's up button. Controlling the motor downwards by the emitter is equal to pressing the down button. Stop the motor by emitter is equal to press the stop button DC115B is emitter without setting button. Press 1 button and 3 button together is equal to P2 setting button



Add Emitter

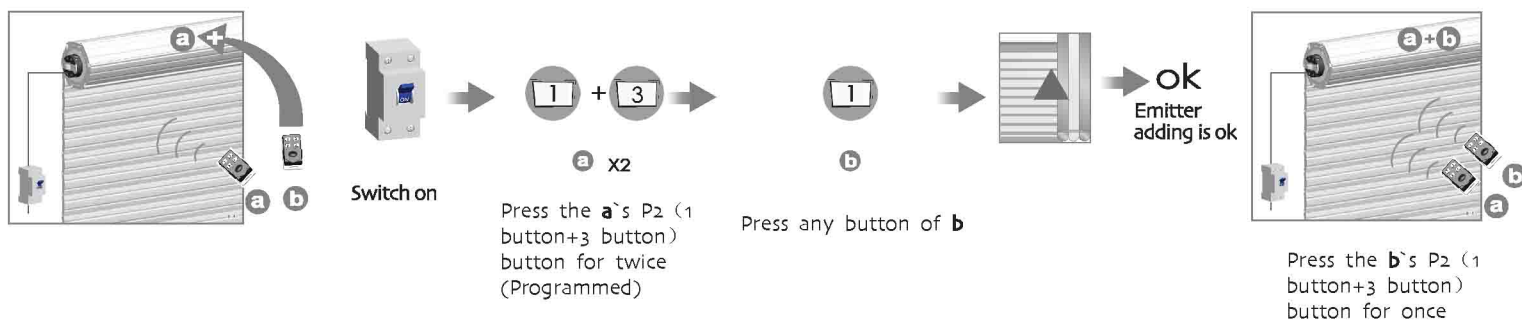
Additional Function



In the process of adding emitter, the time interval between pressing the different keys (T) $1S \leq T \leq 6S$, otherwise the receiver will quit the status of adding emitter.



the interval of re-switch on must over 5 seconds



Cancel Emitter

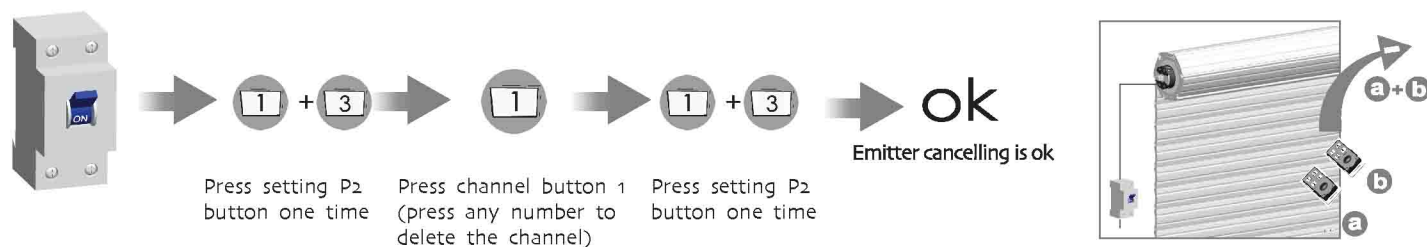
Additional Function



In the process of clearing emitter, the time interval between pressing the different keys (T) $1S \leq T \leq 6S$, otherwise the receiver will quit the status of clearing emitter.



Canceling emitter is that remove all the memory of receiver stored in radio motor



All controls support 433MHz & 868MHz
All controls support 230V/50Hz & 120V/60Hz



R: Radio
Mechanic Limit + Built-in Receiver



Radio Tubular Motor
(single button control all circulatingly)

Specification

Version No. : A/00



Technical Support



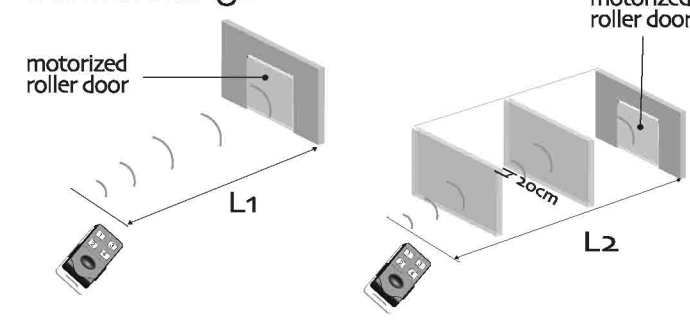
Radio Tubular Motor

One R motor maximum can store 20 channels, over 20 channels, if still need add new channels, it will be repeating covered in turn from second channel.



In the process of set up emitter and R type motor, every time press the key, motor will whistle one time as the signal (not press any key within 4 seconds after the whistle, the motor will turn to the original state). After the success of the set up, motor continuous whistle many times as signal.
Group control channel match code is unworkable, when group channel work together, the emitter can't be programmed, emitter-add and emitter-cancel still means.

Control Range



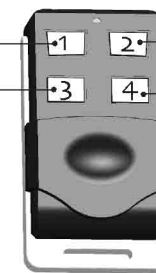
	L1 Open	L2 Partition	Emission frequency
230V/50Hz	200m	35m	433.92MHz
120V/60Hz	200m	35m	



Matchable emitter

Technical Support

1 channel
2 channel
3 channel
4 channel



DC115B



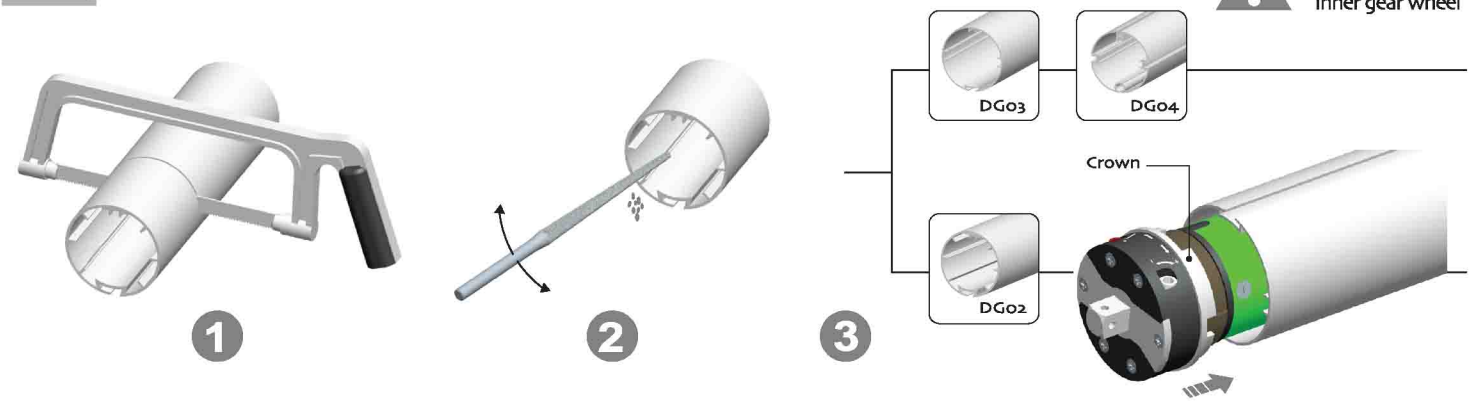
For the emitters without setting button like DC115B your can press 1 button and 3 button at the same time to work as the same function as setting button.



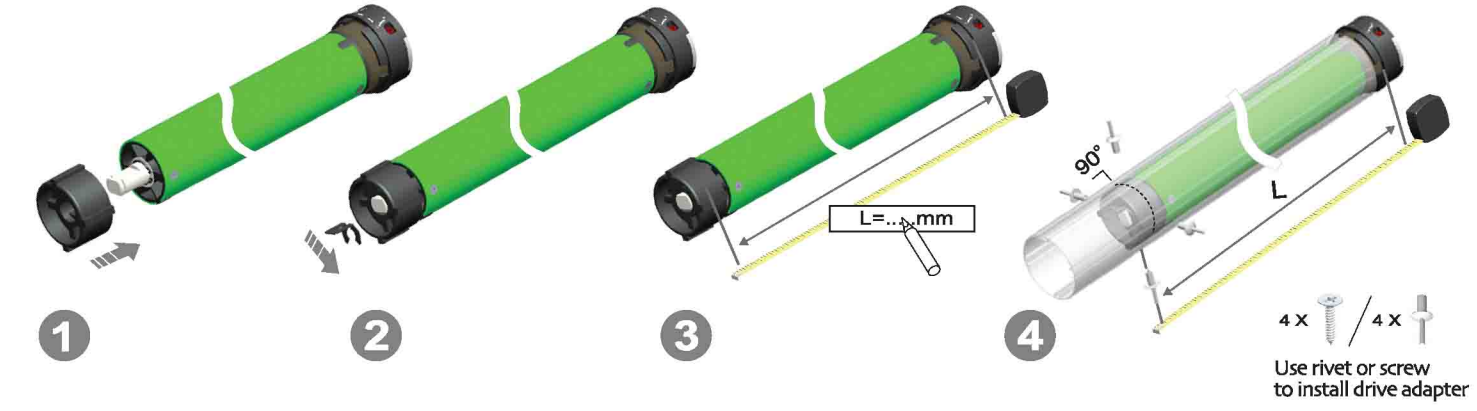
Attention



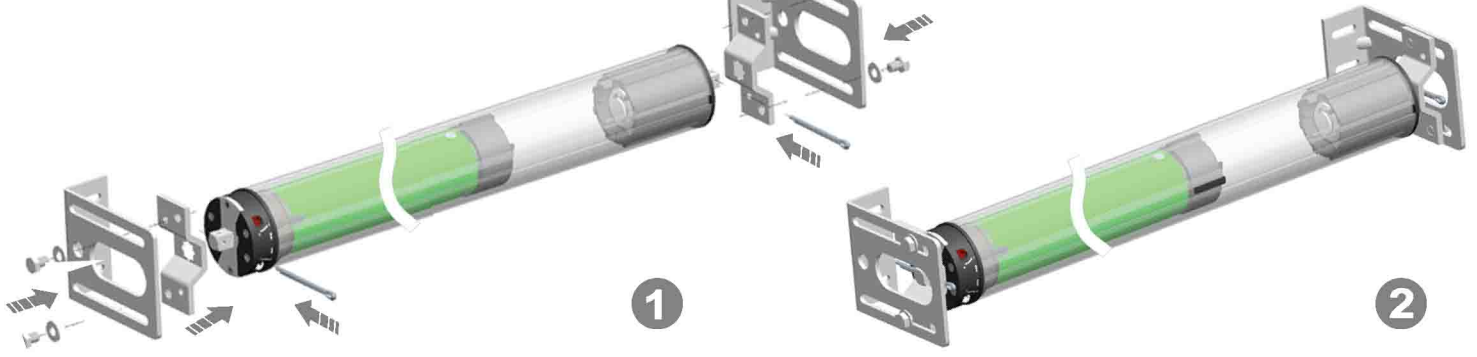
1 Crown installation



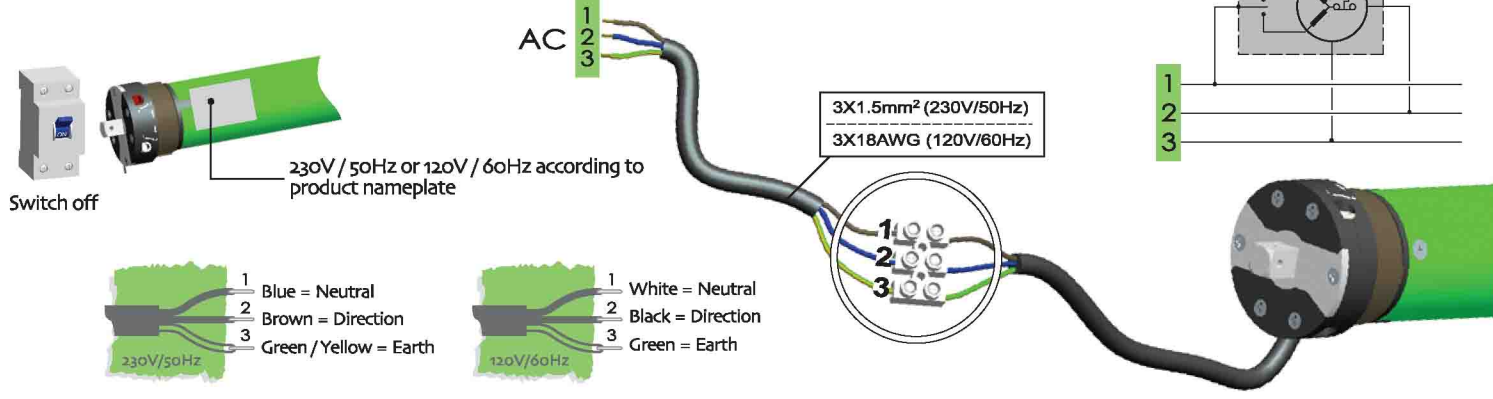
2 Drive adapter installation



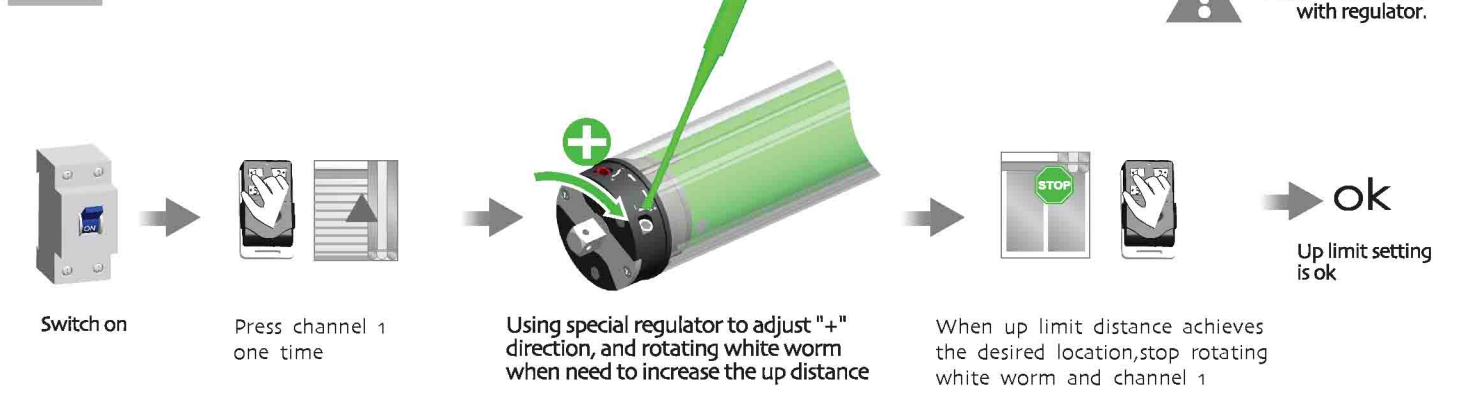
3 Bracket installation



4 Circuit installation



5 Up limit setting



6 Down limit setting

