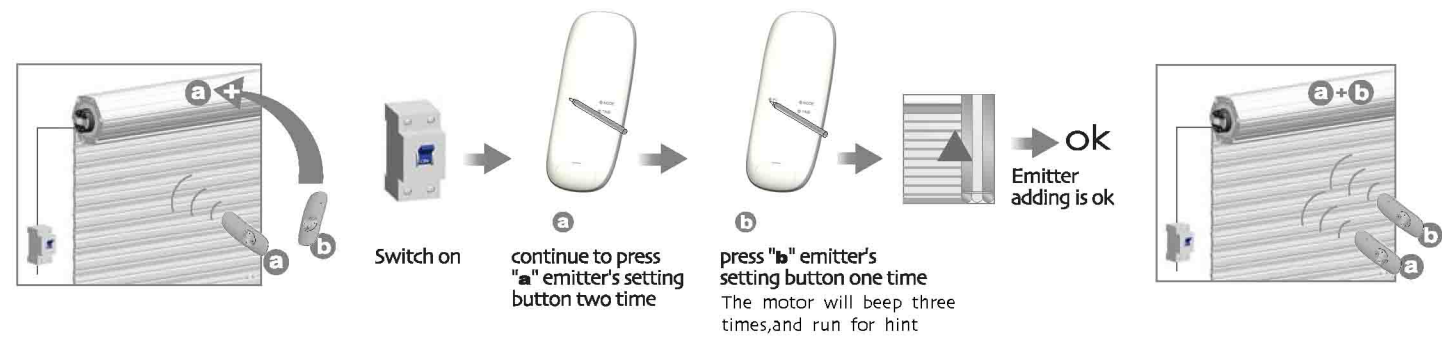




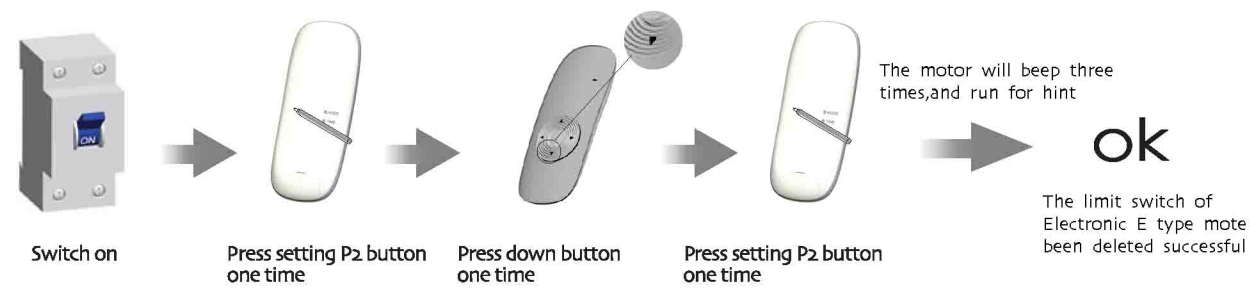
Add Emitter

Additional Function



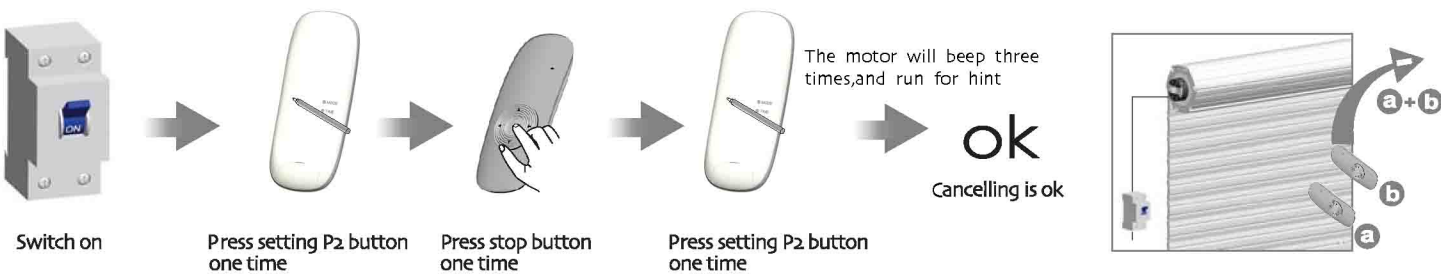
delete the limit

Additional Function



Cancel Emitter

Additional Function



Common failures and solutions

Attention

	Fail-phenomena	Failure causes	solutions failure recovery
1	Switch on, the drive adapter runs in one-way operation	setting of limit switch in the motor is uncompleted	re-setting limit switch
2	motor starts slowly or not work after connect power	a. Power voltage is slow b. Wiring error c. Overload d. Improper installation	a. Adjust power to rated data b. Check circuit and correct wiring connecting c. Rated torque associated with the installation of the load d. Re-install the motor
3	Motor stops suddenly after running	Motor stops suddenly after running	Motor will automatically resume work after 20 minutes cooling
4	Abnormal sound during roller blinds in operation	Outer tube is too long, led the rolling shutter connects with both sides of bracket too tightly	If idler is active, propering make the tube shorter to avoid too tight status.



All controls support 433MHz & 868MHz
All controls support 230V/50Hz & 120V/60Hz

AC TUBULAR MOTOR

Electronic
Electronic Limit + Built-in Receiver



Electronic Tubular Motor Specification

Version No. : A/00

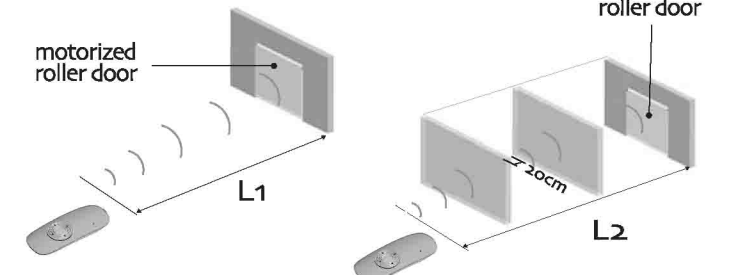


Technical Support

- 5-channel emitter = single channel emitter x 5
One channel of emitter can control 20 receivers at most at the same time.
- Electronic Tubular Motor
One Electronic motor maximum can store 20 channels, over 20 channels, if still need add new channels, it will be repeating covered in turn from second channel.

Please set the limit position before use, as the setting method please see: 'set up/down limit position' as reference.
Group control programme is noneffective; deleting programme, adding programme and setting limit switch is effective

Control Range



	L1 Open	L2 Partition	Emission frequency
230V/50Hz	200m	35m	433.92MHz
120V/60Hz	200m	35m	

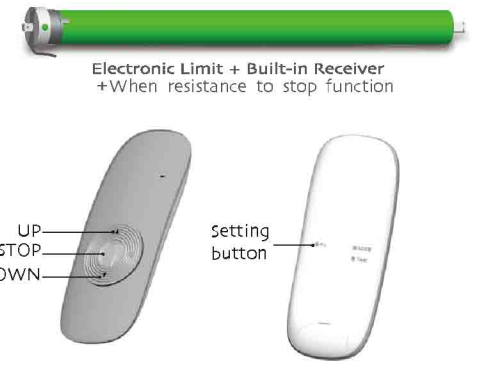


Matchable emitter

Technical Support



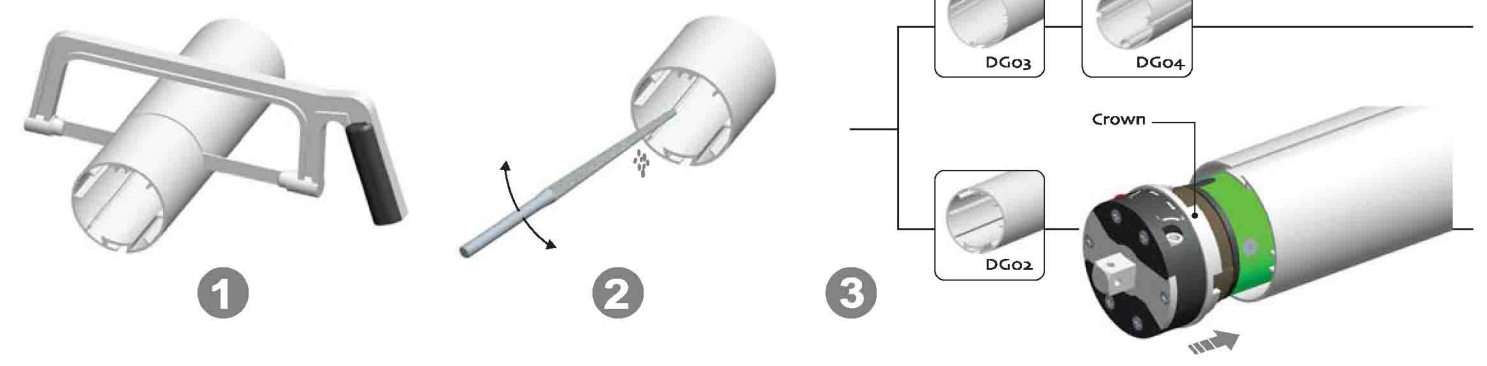
Button specification



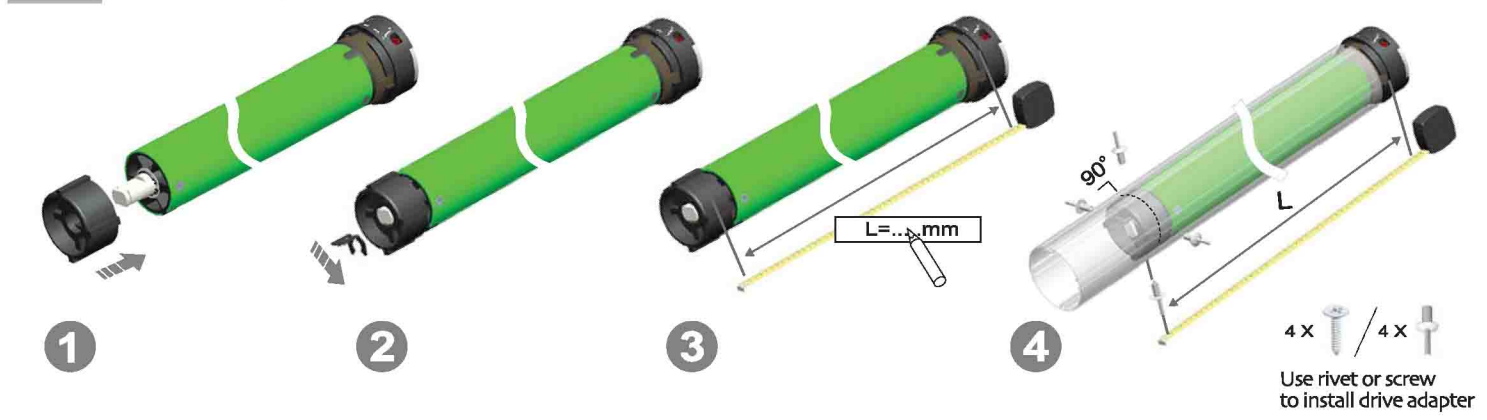
Attention



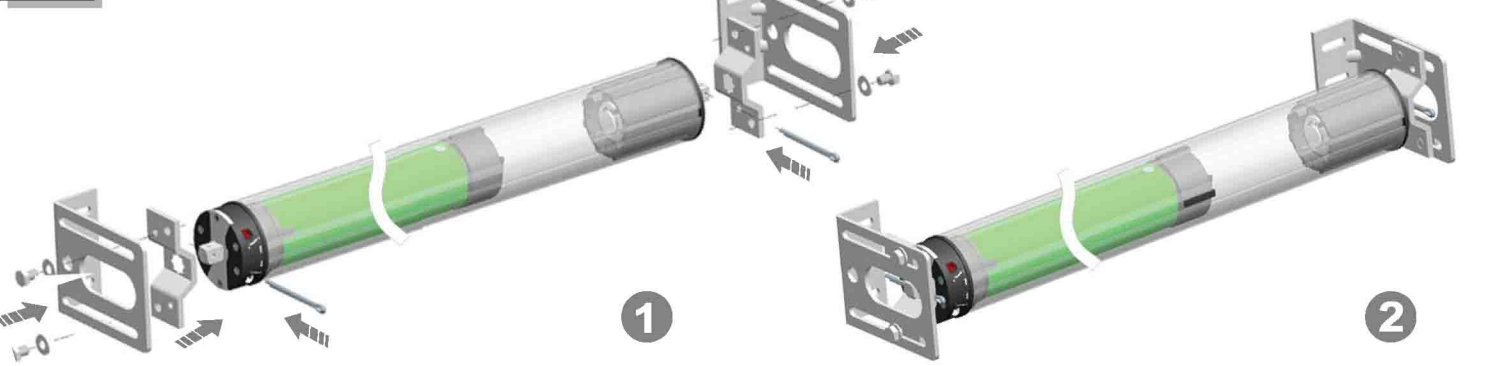
1 Crown installation



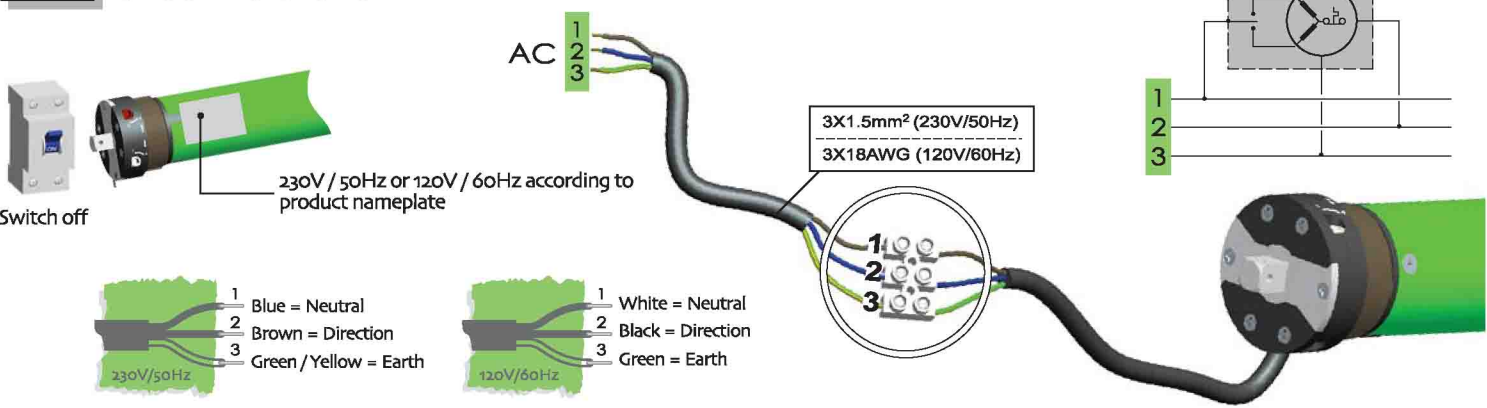
2 Drive adapter installation



3 Bracket installation

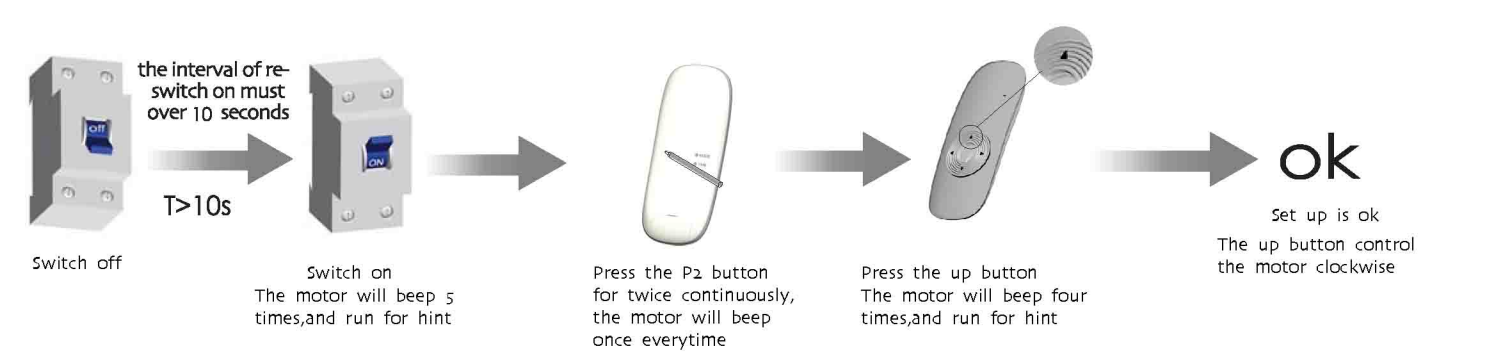


4 Circuit installation

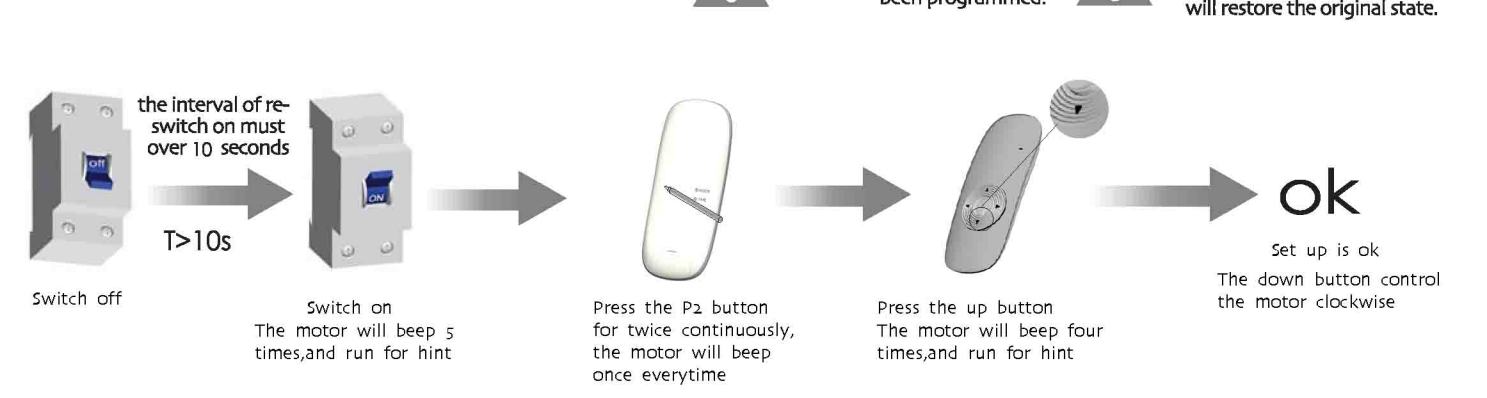


5 Programming the first transmitter

The first method



The second method



6 Set up/down limit position

