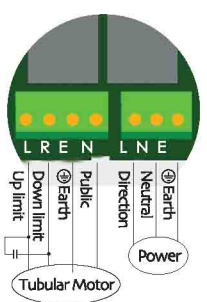
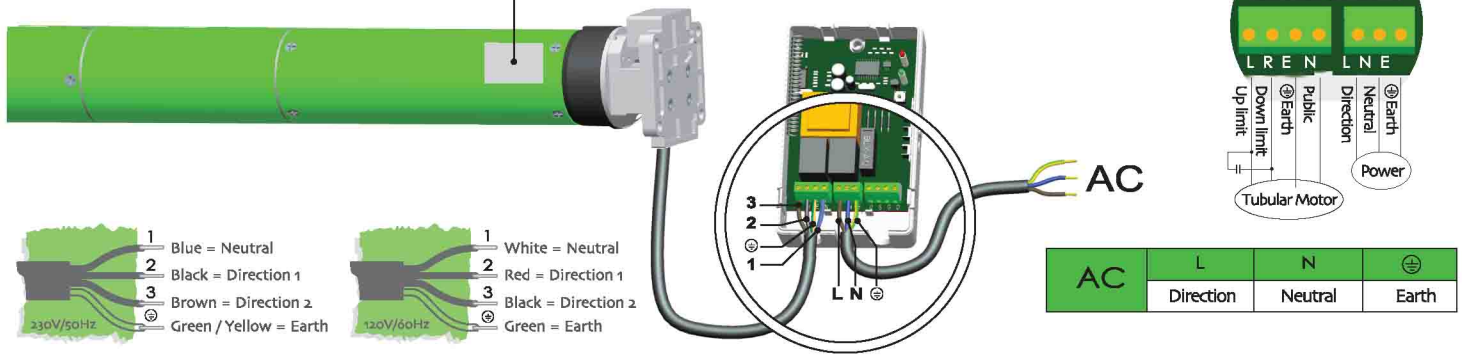


6

Circuit installation C

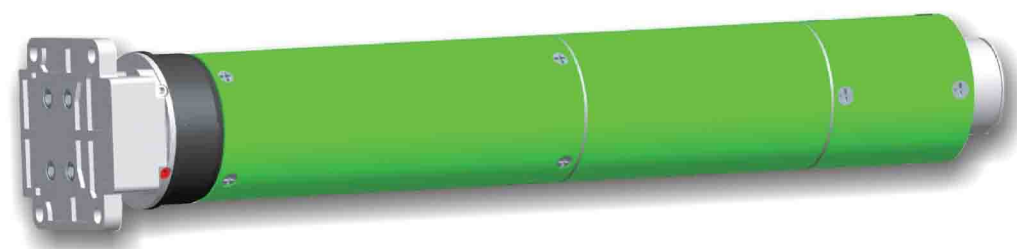
⚠ 230V / 50Hz or 120V / 60Hz according to product nameplate



DM92S Manual Tubular Motor Specification

S: Standard Mechanic Limit

910 limit head

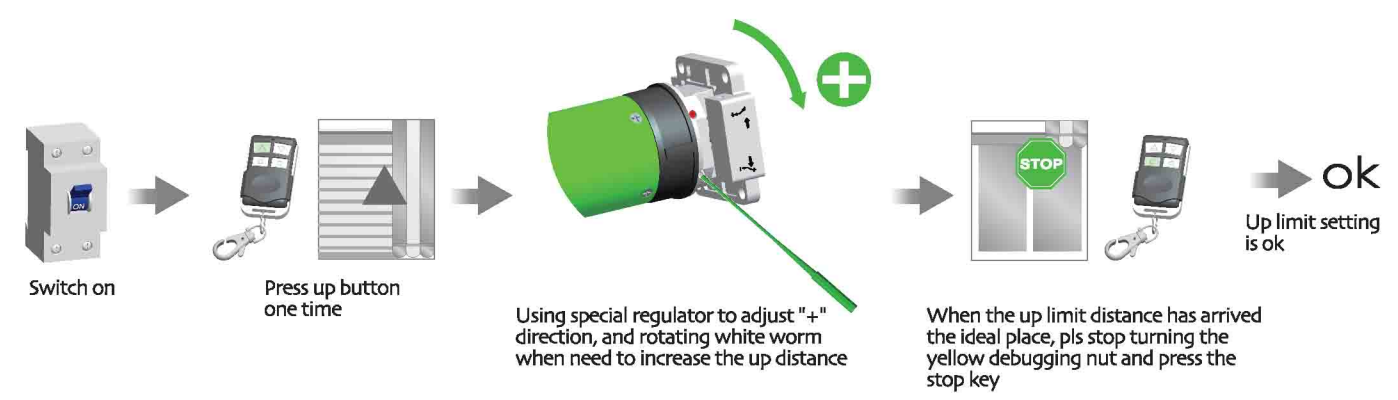


Version No. : A/00

7

Up limit setting

⚠ Install motor at the right hand when we stand indoor and look outsidewith regulator.



T Technical Support

Product Nameplate

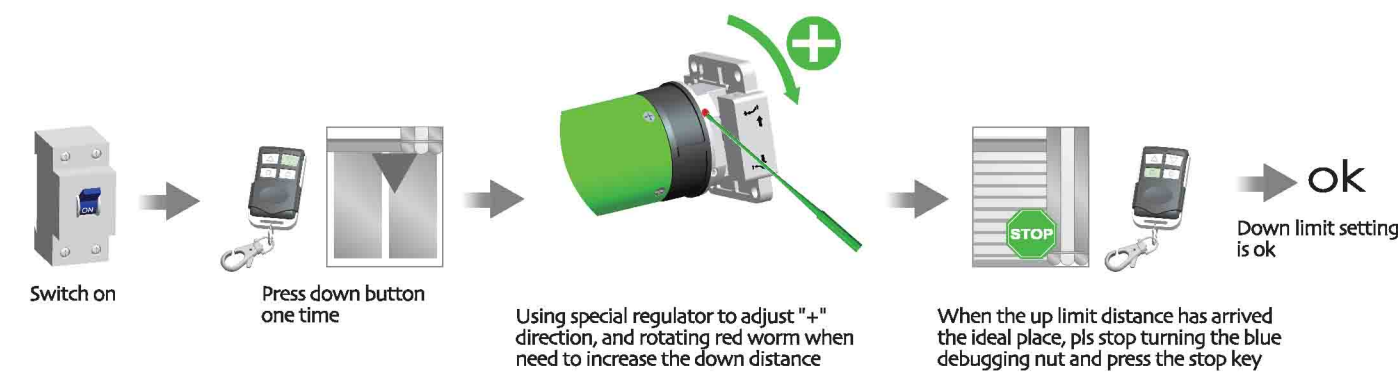


Rated Current	Frequency	Work Time	Motor Model
TUBULAR MOTOR DM92S -230			
Rated Torque	230N.m	12min ⁻¹	Rated Speed
Rated Voltage	230V	50Hz	Ø92
Rated Power	602W	2.75A	4min
Motor Weight	13.26Kg	IP44	I.cl.H
Tubular Single Phase Asynchronous Motor			
Model Of Motor → DM 92 S -- 230 / 12			
Dooya Tubular Motor		Tube Diameter	Standard Type
Rated Torque (N.m)		Rated Speed (rpm)	

8

Down limit setting

⚠ Install motor at the right hand when we stand indoor and look outsidewith regulator.



T Technical Support

Instruction Of The Motor



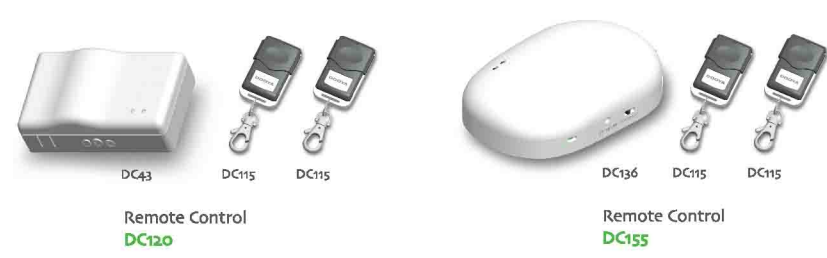
!

Common failures and solutions

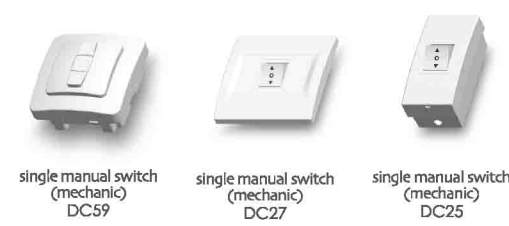
Attention	Fail-phenomena	Failure causes	solutions failure recovery
1	Press the upward button of the controller, the shutter move downward	Inside wire connecting of the controller is wrong	Exchange the position of black wire and brown wire
2	Switch on, the drive adapter runs in one-way operation	Inside limit switch of motor doesn't open	Crown running one circle in the opposite direction of the drive adapter, then it works
3	motor starts slowly or not work after connect power	a. Power voltage is slow b. Wiring error c. Overload d. Improper installation	a. Adjust power to rated data b. Check circuit and correct wiring connecting c. Rated torque associated with the installation of the load d. Re-install the motor
4	Motor stops suddenly after running	Motor stops suddenly after running	Motor will automatically resume work after 20 minutes cooling
5	Abnormal sound during roller blinds in operation	Outer tube is too long, led the rolling shutter connects with both sides of bracket too tightly	If idler is active, propering make the tube shorter to avoid too tight status.

A Technical Support

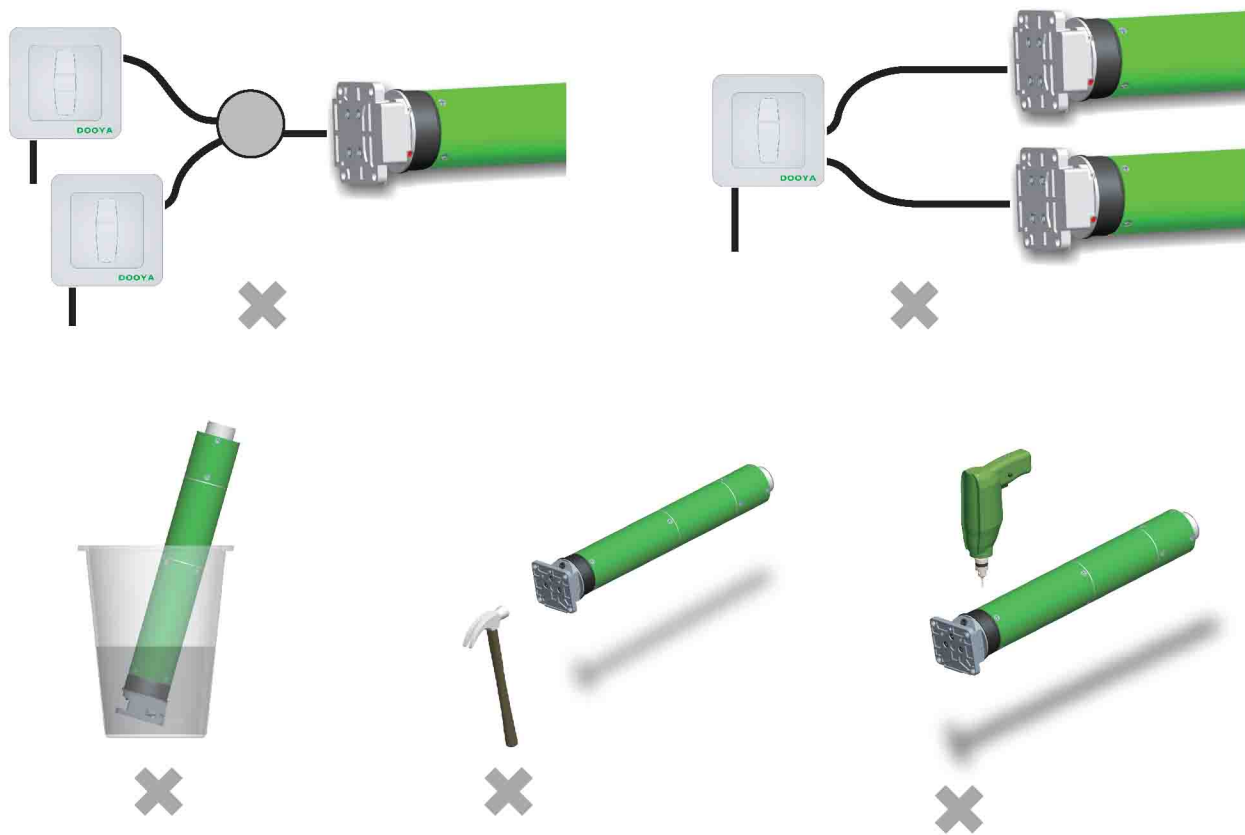
Matchable Control System



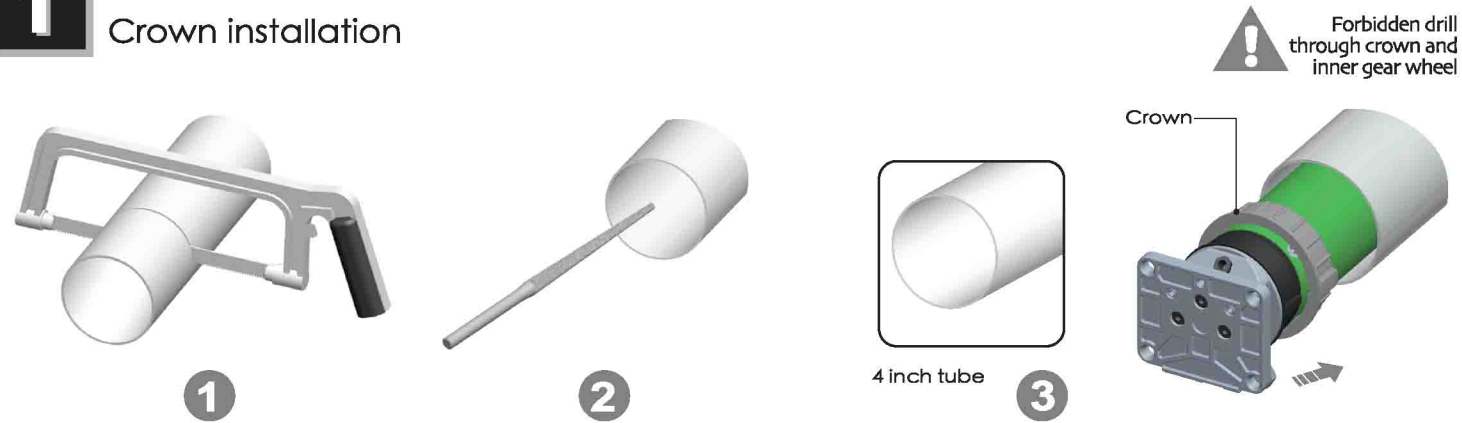
Other Control System



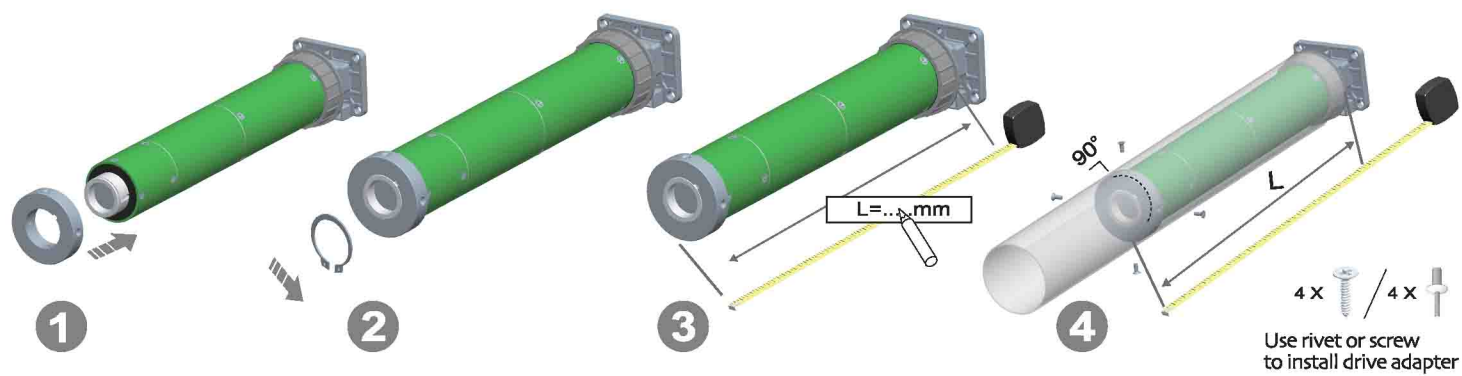
! Attention



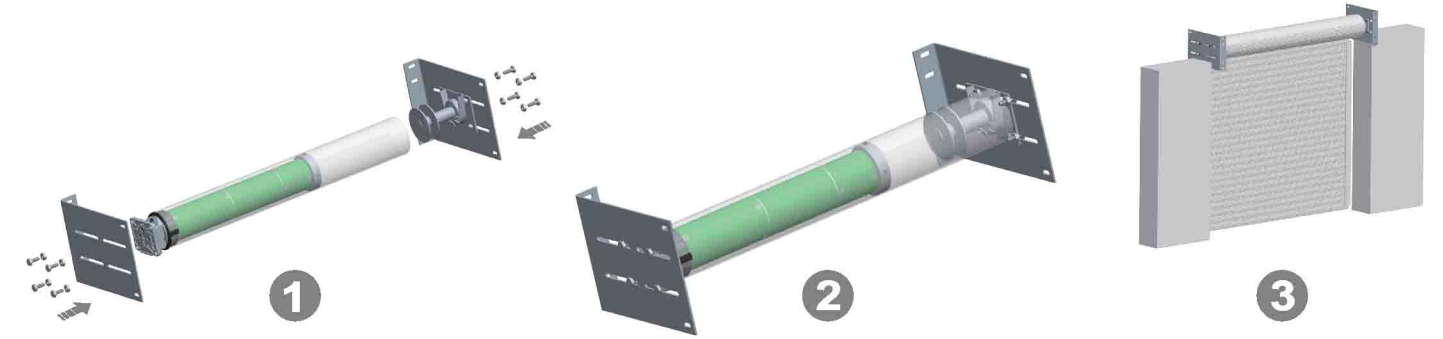
1 Crown installation



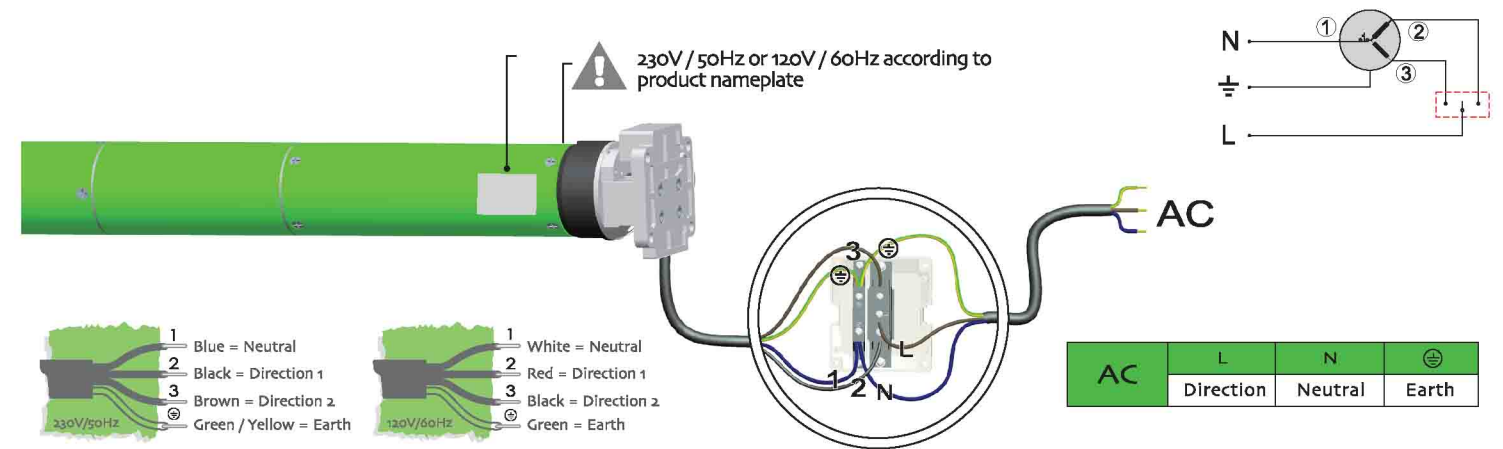
2 Drive adapter installation



3 Bracket installation A



4 Circuit installation A



5 Circuit installation B

